

3 — Phoenix Service Software Instructions

(This page left intentionally blank.)

Table of Contents

Phoenix installation steps in brief.....	1-5
Installing Phoenix.....	1-6
Updating Phoenix installation.....	1-8
Uninstalling Phoenix.....	1-9
Repairing Phoenix installation.....	1-10
Phoenix service software data package overview.....	1-11
Installing Phoenix data package.....	1-11
Uninstalling Phoenix data package.....	1-15
Configuring users in Phoenix.....	1-16
Managing connections in Phoenix.....	1-16
Installing flash support files for FPS-8 and FPS-10.....	1-19
Updating FPS-8 and FPS-10 flash prommer software.....	1-22
Activating FPS-8.....	1-23
Deactivating FPS-8.....	1-24

List of Figures

Figure 1 Dongle not found.....	1-6
Figure 2 Disclaimer text.....	1-7
Figure 3 InstallShield Wizard Complete.....	1-8
Figure 4 Installation interrupted.....	1-9
Figure 5 Remove program.....	1-9
Figure 6 Finish uninstallation.....	1-10
Figure 7 Repair program.....	1-11
Figure 8 Continue data package installation.....	1-12
Figure 9 Data package setup information.....	1-13
Figure 10 Data package destination folder.....	1-13
Figure 11 Start copying files.....	1-14
Figure 12 Finish data package installation.....	1-14
Figure 13 Uninstalling Phoenix data package.....	1-15
Figure 14 Finishing data package uninstallation.....	1-15
Figure 15 Login.....	1-16
Figure 16 Login, user configured.....	1-16
Figure 17 Select Mode: Manual.....	1-17
Figure 18 Connections list.....	1-18
Figure 19 Connection information.....	1-18
Figure 20 Scan product.....	1-19
Figure 21 Product support module information (example from RM-1).....	1-19
Figure 22 Flash update welcome dialog.....	1-20
Figure 23 Flash installation interrupted.....	1-20
Figure 24 Flash destination folder.....	1-21
Figure 25 Finish flash update.....	1-21
Figure 26 Choosing Prommer maintenance.....	1-22
Figure 27 Prommer SW update finished.....	1-22
Figure 28 Prommer maintenance window.....	1-23
Figure 29 Flash directory window.....	1-23
Figure 30 Prommer maintenance.....	1-24
Figure 31 Box activation.....	1-24
Figure 32 Deactivation warning.....	1-25

(This page left intentionally blank.)

■ Phoenix installation steps in brief

Before you begin

Recommended PC HW requirements:

- Computer processor: Pentium 700 MHz or higher
- RAM 256 MB
- Disk space 100-200 MB

Supported operating systems:

- Windows 2000 Service Pack 3 or higher
- Windows XP Service Pack 1 or higher

Context

Phoenix is the service software for reprogramming, testing and tuning the phone.

Phoenix installation contains:

- Service software support for all phone models included in the package
- Flash update package files for programming devices
- All needed drivers for:
 - DK2 dongle
 - DKU-2 USB cable

Note: Separate installation packages for flash update files and drivers are also available, but it is not necessary to use them unless updates appear between Phoenix service software releases. If separate update packages are used, they should be used after Phoenix and data packages have been installed.

The phone model specific data package includes all changing product specific data:

- Product software Binary files
- Files for type label printing
- Validation file for the Faultlog repair data reporting system
- All product specific configuration files for *Phoenix* software components

Note: *Phoenix* service SW and phone data packages should only be used as complete installation packages. Uninstallation should be made from the Windows Control Panel.

To install *Phoenix*, you need to:

Steps

1. Connect a DK2 dongle to your computer.
2. Install the *Phoenix* Service SW.
3. Install the phone-specific Data Package for *Phoenix*.
4. Configure users.
5. Manage connection settings (depends on the tools you are using).

If you use FPS-8:	<ul style="list-style-type: none">• Update FPS-8 SW• Activate FPS-8
-------------------	--

If you use FPS-10:	<ul style="list-style-type: none"> • Update FPS-10 SW Note: There is no need to activate FPS-10. • Activate SX-4 smart card if you need tuning and testing functions in service software Note: When FPS-10 is used only for product SW updates, SX-4 smart card is not needed.
--------------------	--

Results

Phoenix is now ready to be used with FPS-8 or FPS-10 flash prommers and other tools as well.

■ Installing Phoenix

Before you begin

- Check that a dongle is attached to the parallel port of your computer.
- Download the installation package (for example, *phoenix_service_sw_2004_39_x_xx.exe*) to your computer (in C:\TEMP, for instance).
- Close all other programs.
- Depending on the operating system, administrator rights may be required to be able to install Phoenix .
- If uninstalling or rebooting is needed at any point, you will be prompted by the InstallShield program.

Context

At some point during the installation procedure you may get the following message:

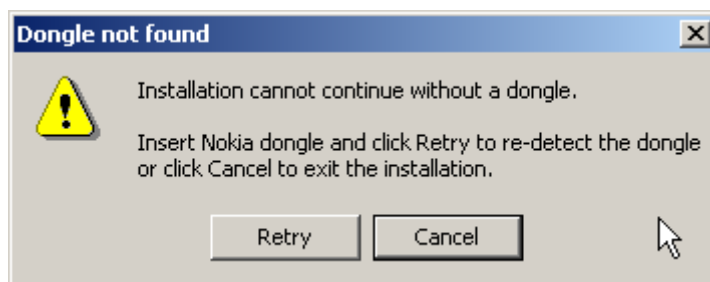


Figure 1 Dongle not found

One possible reason may be a defective or too old PKD-1 dongle (five digit serial number dongle when used with FPS-8/FPS-10 prommers).

First check the COM/parallel ports used! After correcting the problem Installation can be restarted.

For more detailed information, please refer to Phoenix Help files. Each feature in Phoenix has its own Help function, which can be activated while running the program. Press the F1 key or the feature's Help button to activate a Help file.

Steps

1. To start installation, run the application file (for example, *phoenix_service_sw_2004_39_x_xx.exe*).
2. In the *Welcome* dialogue, click Next.

3. Read the disclaimer text carefully and click Yes.

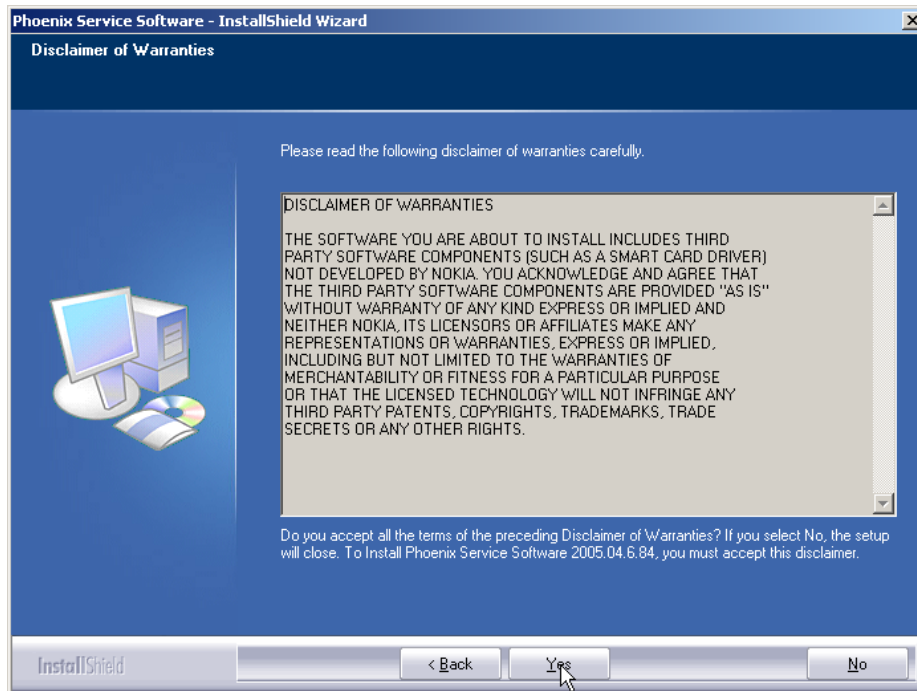


Figure 2 Disclaimer text

4. Choose destination folder.

The default folder `C:\ProgramFiles\Nokia\Phoenix` is recommended.

5. To continue, click Next.

To choose another location, click Browse (not recommended).

6. Wait for the components to be copied.

The progress of the setup is shown in the *Setup Status* window.

7. Wait for the drivers to be installed and updated.

The process may take several minutes to complete.

If the operating system does not require rebooting, the PC components are registered right away.

If the operating system requires restarting your computer, the Install Shield Wizard will notify you about it. Select Yes... to reboot the PC immediately and No... to reboot the PC manually afterwards.

After the reboot, components are registered and Phoenix is ready for use.

Note: Phoenix does not work, if components have not been registered.

8. To end installation, click Finish.

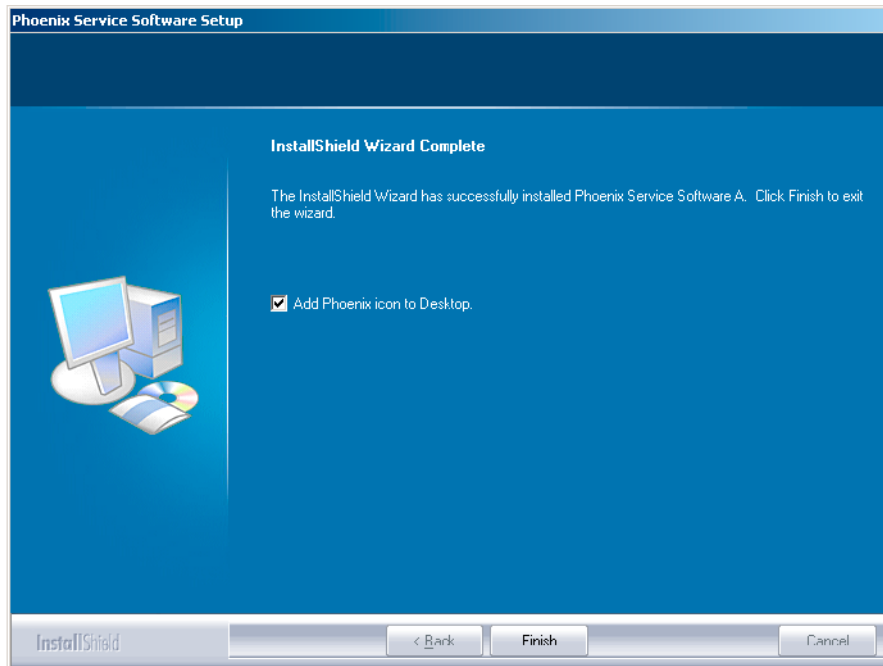


Figure 3 InstallShield Wizard Complete

Phoenix is now ready for use.

Next action

After the installation, Phoenix service software can be used after:

- installing phone model specific data package for Phoenix
- configuring users and connections

FPS-8* and FPS-10 flash prommers can be used after updating their Flash Update Package files.

■ Updating Phoenix installation

Context

- If you already have the *Phoenix* service software installed on your computer, you need to update the software when new versions are released.

To update Phoenix, you need to follow the same steps as when installing it for the first time.

- When you updating (for example, from version **a14_2004_16_4_47** to **a15_2004_24_7_55**), the update will take place automatically without uninstallation.
- Always use the latest available versions of both *Phoenix* and the phone-specific data package. Instructions can be found in the phone model specific Technical Bulletins and phone data package *readme.txt* files (shown during installation).
- If you try to update *Phoenix* with the same version you already have (for example, **a15_2004_24_7_55** to **a15_2004_24_7_55**), you are asked if you want to uninstall the existing version. In this case you can choose between a total uninstallation or a repair installation in a similar way when choosing to uninstall the application from the *Windows* Control Panel.
- If you try to install an older version (for example, downgrade from **a15_2004_24_7_55** to **a14_2004_16_4_47**), installation will be interrupted.

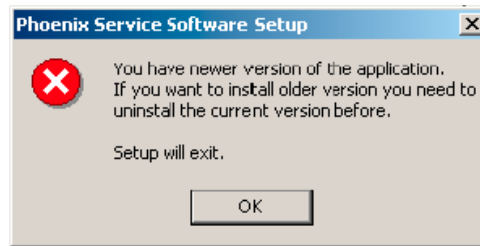


Figure 4 Installation interrupted

- Always follow the instructions on the screen.

Steps

1. Download the installation package to your computer hard disk.
2. Close all other programs.
3. Run the application file (for example, *phoenix_service_sw_2004_39_x_xx.exe*).

Results

A new *Phoenix* version is installed and driver versions are checked and updated.

■ Uninstalling Phoenix

Context

You can uninstall Phoenix service software manually from the Windows Control Panel.

Steps

1. Open the Windows Control Panel and choose Add/Remove Programs.
2. To uninstall Phoenix, choose *Phoenix Service Software* → *Change/Remove* → *Remove*.

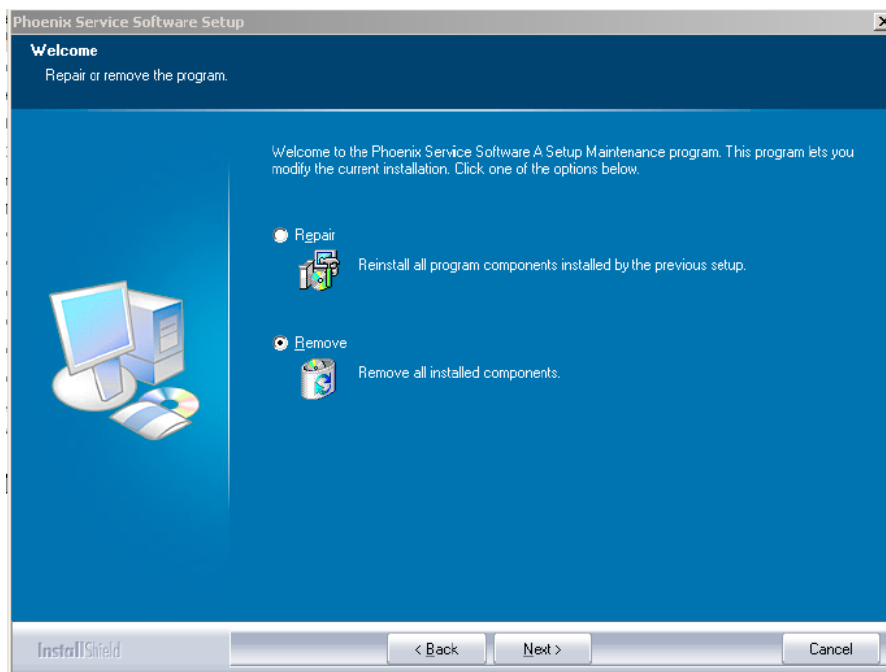


Figure 5 Remove program

The progress of the uninstallation is shown.

3. If the operating system does not require rebooting, click Finish to complete.

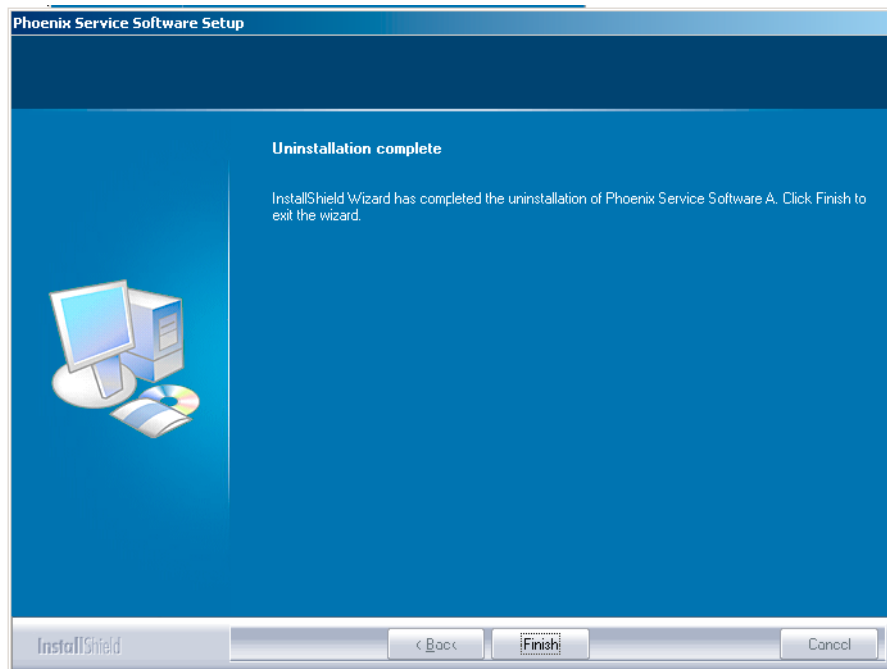


Figure 6 Finish uninstallation

If the operating system requires rebooting, InstallShield Wizard will notify you. Select Yes... to reboot the PC immediately and No... to reboot the PC manually afterwards.

■ Repairing Phoenix installation

Context

If you experience any problems with the service software or suspect that files have been lost, you can use the repair function before completely reinstalling Phoenix.

Note: The original installation package (for example, *phoenix_service_sw_a15_2004_24_7_55.exe*) must be found on your PC when you run the repair setup.

Steps

1. Open *Windows Control Panel* → *Add/Remove Programs* .
2. Select *Phoenix Service Software* → *Change/Remove* .

3. In the following view, select Repair.

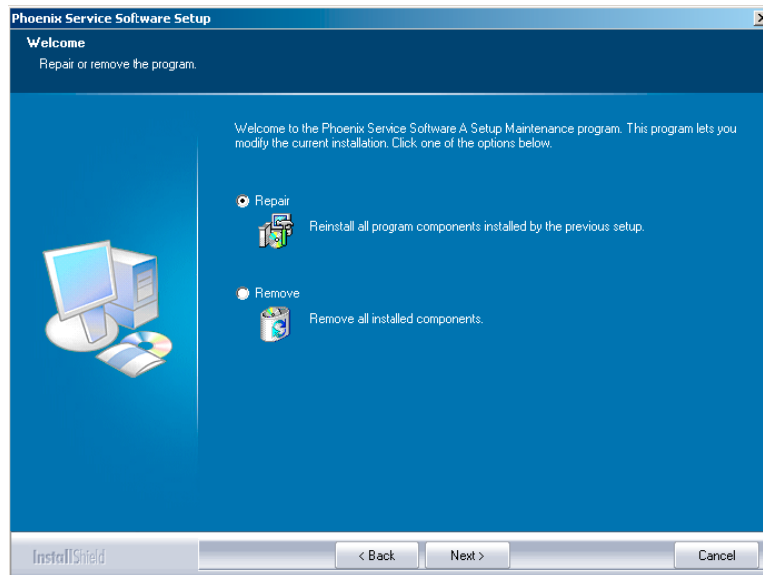


Figure 7 Repair program

Phoenix will now reinstall components and register them.

The procedure is the same as when updating Phoenix.

4. To complete the repair, click Finish.

■ Phoenix service software data package overview

Each product has its own data package (DP). The product data package contains all product-specific data files to make the Phoenix service software and tools usable with a certain phone model.

The data package contains the following:

- Product software Binary files
- Files for type label printing
- Validation file for the Faultlog repair data reporting system
- All product-specific configuration files for Phoenix software components

Data files are stored under **C:\Program Files\Nokia\Phoenix** (default).

■ Installing Phoenix data package

Before you begin

- A product-specific data package contains all data enabling the Phoenix service software and tools usable with a certain phone model.
- Check that the dongle is attached to the parallel port of your computer.
- Install Phoenix service SW.
- Download the installation package (for example, XX-XX*_dp_EA_v_1_0.exe) to your computer (for example, in C:\TEMP).
- Close all other programs.

(* = type designator of the product)

If you already have Phoenix installed on your computer, you will need to update it when a new version is released.

Note: Very often the Phoenix Service SW and the phone-specific data package for Phoenix come in pairs, meaning that a certain version of Phoenix can only be used with a certain version of the data package. Always use the latest available versions of both. Instructions can be found in phone model specific Technical Bulletins and *readme.txt* files of the data packages.

Steps

1. To start installation, run the application file (for example, *XX-XX_dp_EA_v1_0.exe*).
2. Click Next, and wait for the installation files to be extracted.
3. To continue, click Next .

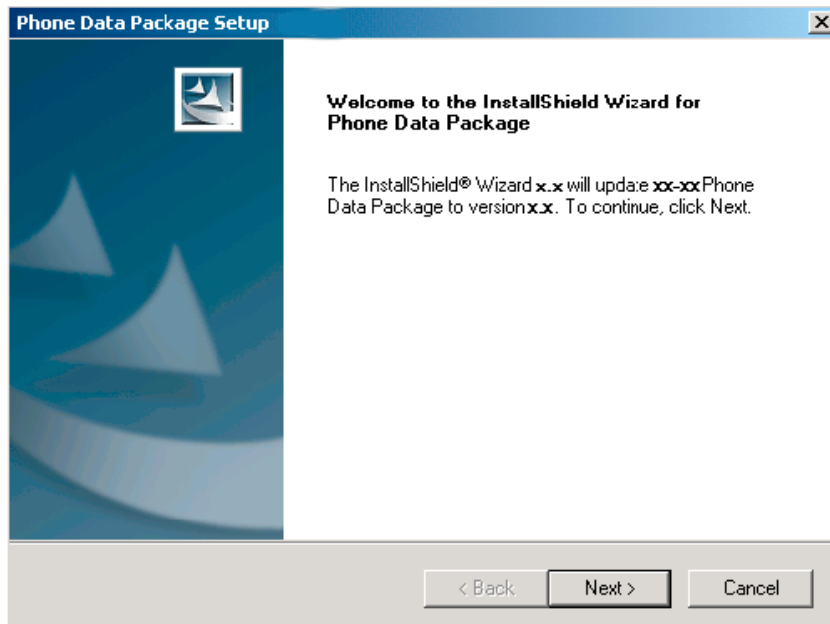


Figure 8 Continue data package installation

In this view you can see the contents of the data package. Read the text carefully. There is information about the Phoenix version required with this data package.

4. To continue, click Next.

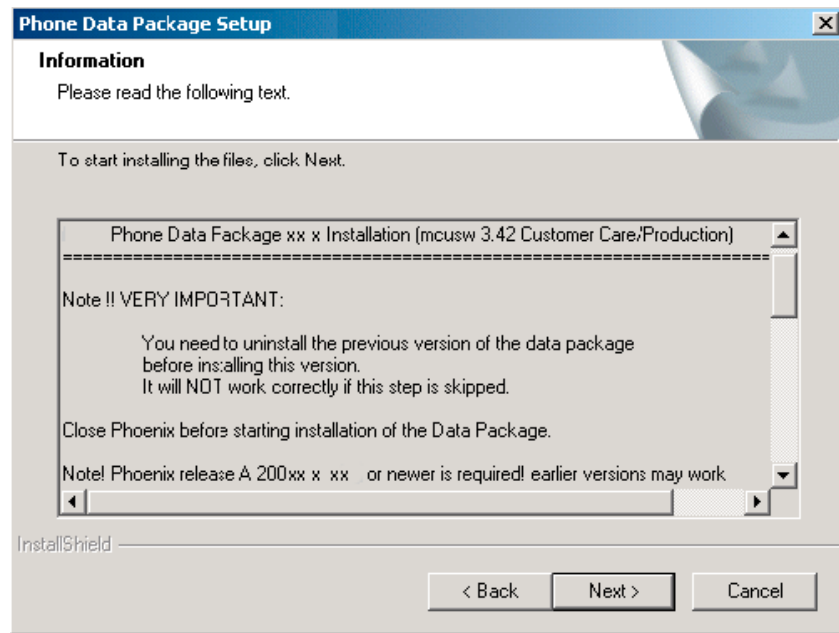


Figure 9 Data package setup information

5. Confirm location and click Next to continue.

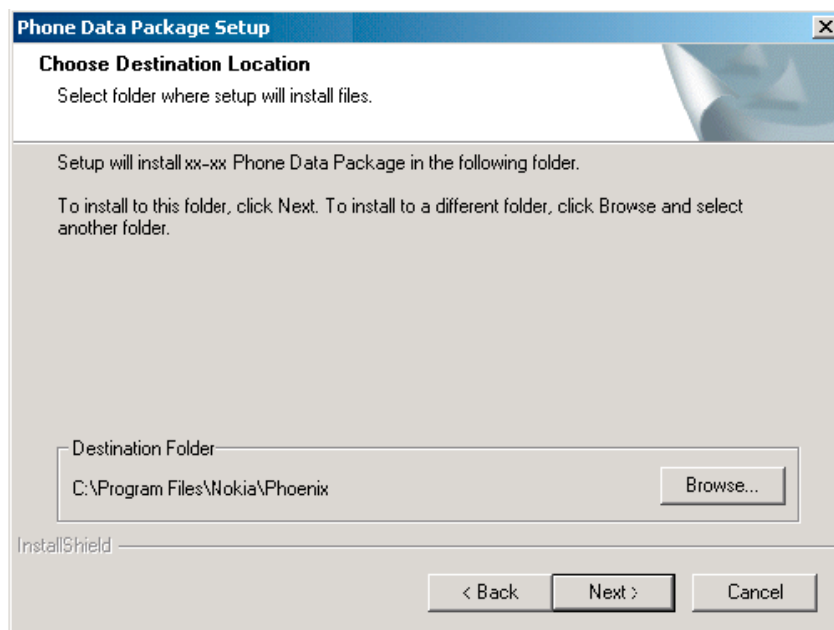


Figure 10 Data package destination folder

The install shield checks where the Phoenix application is installed and the directory is shown.

6. To start copying the files, click Next.

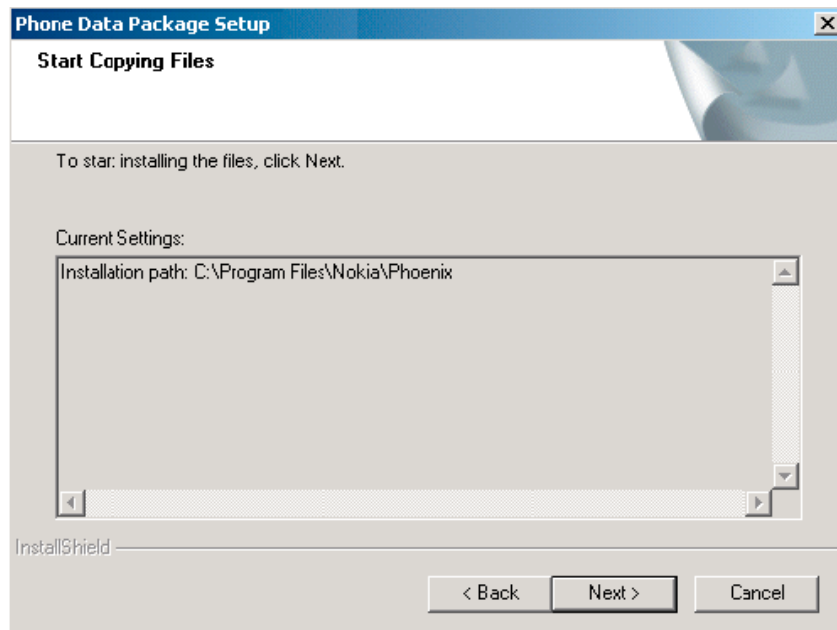


Figure 11 Start copying files

Phone model specific files are installed. Please wait.

7. To complete the installation, click Finish.

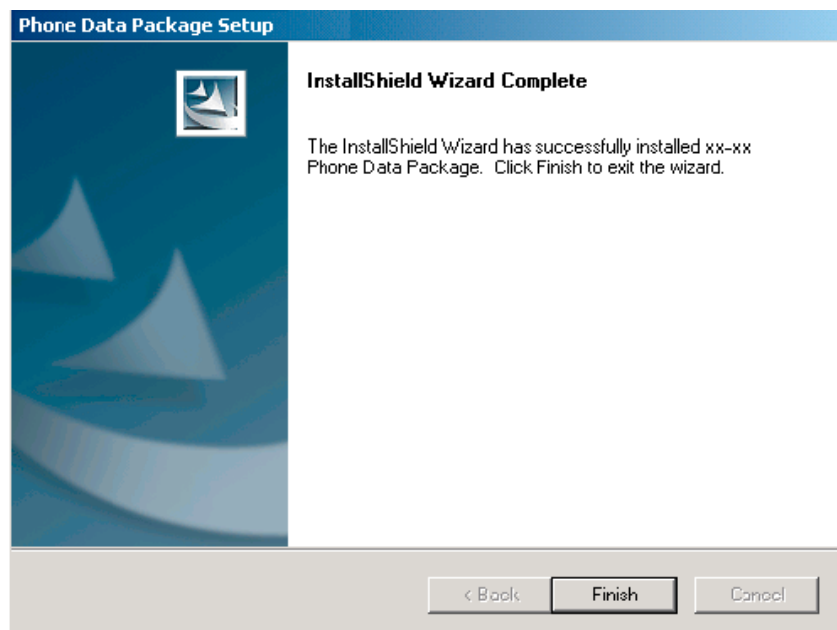


Figure 12 Finish data package installation

You now have all phone model specific files installed in your Phoenix Service SW.

Next action

Phoenix can be used, for example, for flashing phones and printing type labels after:

- Configuring users
- Managing connections

FPS-8* and FPS-10 can be used after updating their Flash Update Package files.

■ Uninstalling Phoenix data package

Context

If you try to install the same version of the Phoenix data package that you already have, you are asked if you want to uninstall the existing version.

There is no need to uninstall the older version of a data package, unless instructions to do so are given in the *readme.txt* file of the data package and bulletins related to the release.

Please read all related documents carefully.

Steps

1. To uninstall the data package, click OK Cancel to interrupt the uninstallation.

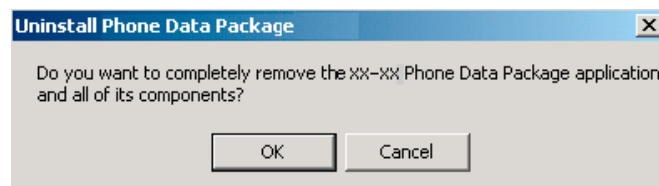


Figure 13 Uninstalling Phoenix data package

2. Once the previously installed data package is uninstalled, click Finish.

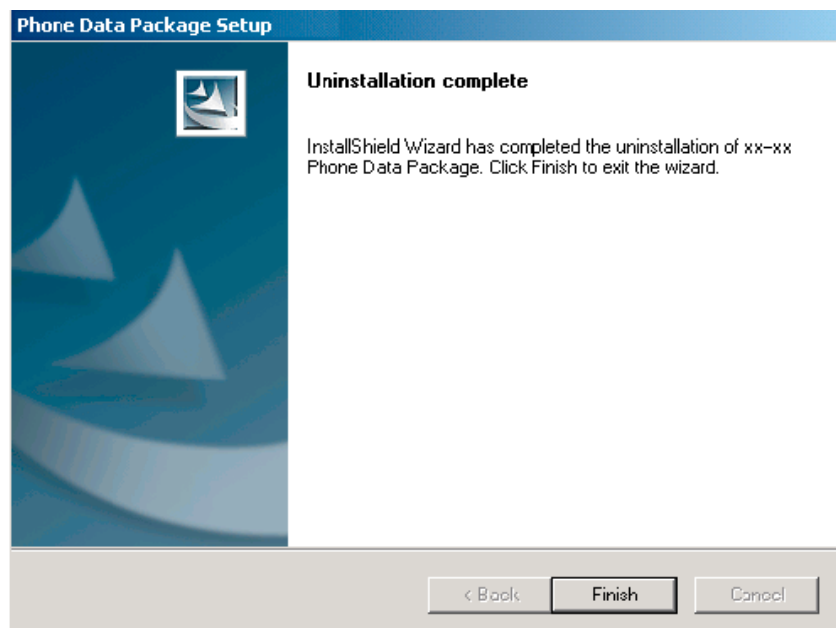


Figure 14 Finishing data package uninstallation

Alternative steps

- You can also uninstall the data package manually from *Windows Control Panel* → *Add/Remove Programs* → *xx-xx * Phone Data Package* . (*= type designator of the phone)

Next action

Run the installation package again to continue installation from the beginning.

■ Configuring users in Phoenix

Steps

1. Start Phoenix Service SW and log in.

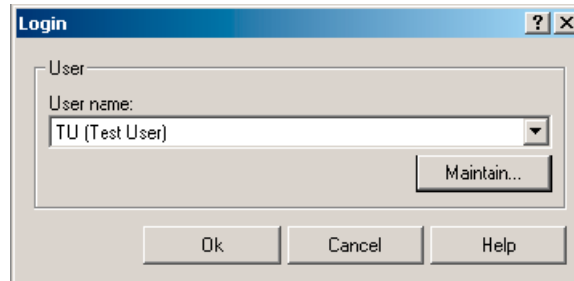


Figure 15 Login

If the user ID is already configured, choose it from the dropdown list and click OK.

To add a new user or edit existing ones, click Maintain.

2. To add information for a new user, click New.
3. Type in the name and initials of the user and click OK.
A new user is now created.
4. Click OK.
You are now able to login with the user name created.
5. Click OK.

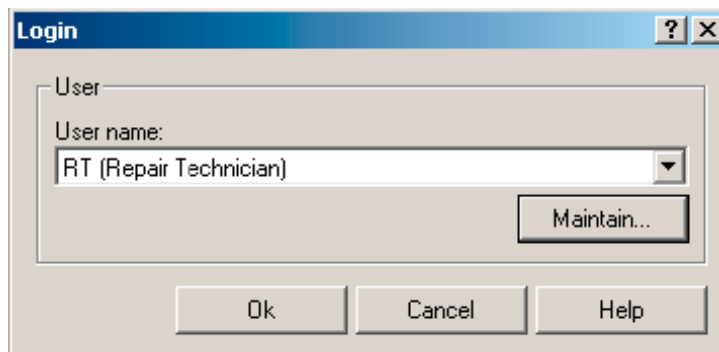


Figure 16 Login, user configured

■ Managing connections in Phoenix

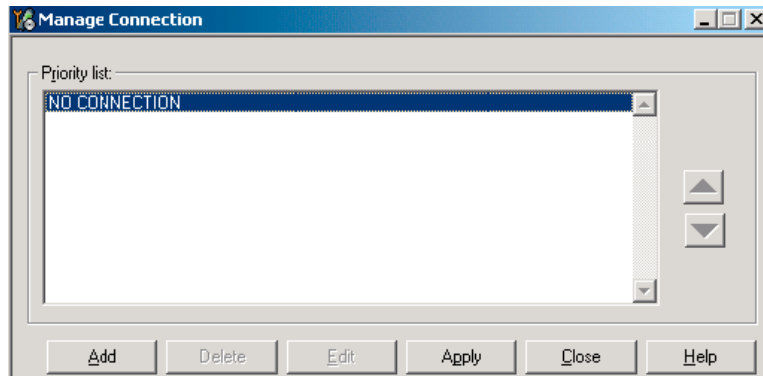
Context

With the Manage Connections feature you can edit and delete existing connections and create new ones.

Steps

1. Start *Phoenix* Service SW and log in.
2. Choose *File* → *Manage Connections*.

3. To add a new connection, click Add, and select if you want to create it manually or by using the Connection Wizard.



In the following dialogs you are asked to select settings for the connection. If you use the Wizard, connect the tools and a phone to your PC and the wizard will automatically try to configure the correct connection.

4. Select Manual mode, and click Next to continue.

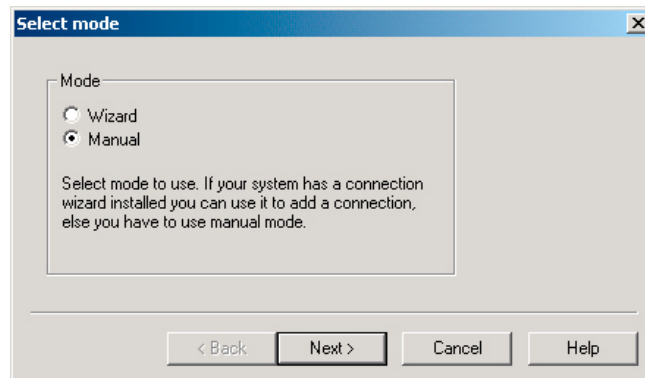


Figure 17 Select Mode: Manual

- i For an FPS-10 flash prommer with a **USB Connection**, choose the following connection settings:
 - Media: FPS-10 USB
 - Device Index: 0
 - Serial Num: See Serial No from the label attached to the bottom of your FPS-10
 - Active Media: USB
- ii For an FPS-10 flash prommer with a **LAN connection**, choose the following connection settings:
 - Media: FPS-10 TCP/IP
 - Net Serv Name: Select Scan. Choose your own FPS-10 device based on the correct MAC address. See Serial No from the label attached to the bottom of your FPS-10.
 - Port Num: Use default value, click Next.
 - Protocol Family: Use default value, click Next.
 - Socket Type: Use default value, click Next.
 - TX Buffer Size: Use default value, click Next.
 - RX Buffer Size: Use default value, click Next.

Note: When the phone is connected to a PC for the first time, allow the PC to install the USB device drivers first.

Please note that this may take some time to complete.

After the drivers are installed and if there are problems, check that the USB connection is active from the Windows Control Panel or contact the local PC support.

iii For an FPS-8 flash prommer, choose the following connection settings:

- Media: FPS-8
- Port Num: COM Port where FPS-8 is connected
- COMBOX_DEF_MEDIA: FBUS

iv For a plain **USB connection** choose the following connection settings:

Note: First connect the DKU-2 USB cable between the PC USB port and phone.

- Media: USB

Note: When the phone is connected to a PC for the first time, allow the PC to install the USB device drivers first.

Please note that this may take some time to complete.

After the drivers are installed and if there are problems, check that the USB connection is active from the Windows Control Panel or contact the local PC support.

5. To complete the configuration, click Finish.

If you are using the Wizard, connect the tools and a phone to your PC and the wizard will automatically try to configure the correct connection. Please note that this may take time because Phoenix will go through all connections on the PC.

6. Click the connection you want to activate and use up/down arrows to move it on top of the list, then click Apply.

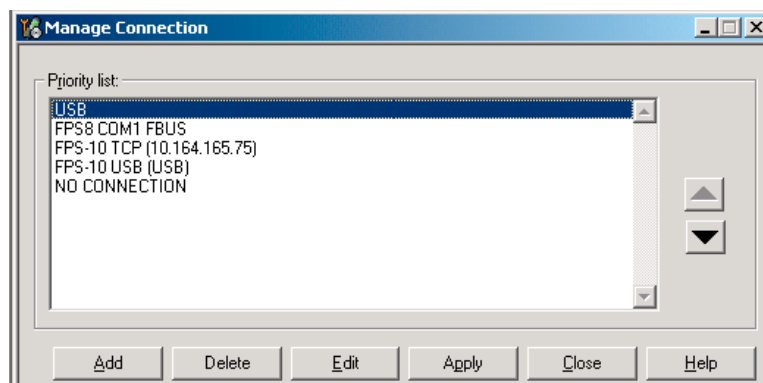


Figure 18 Connections list

The connection is now selected and can be used after closing the *Manage Connections* window.

The selected connection is shown on the right hand bottom corner of the screen.



Figure 19 Connection information

7. To use the selected connection, connect the phone to *Phoenix* with correct service tools, make sure that the phone is switched on and from the File menu, choose Scan Product.

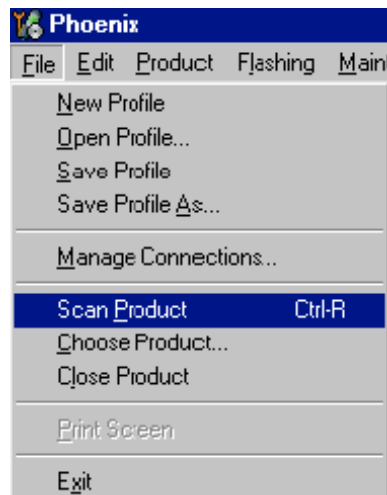


Figure 20 Scan product

Results

The product support module information appears in the status bar:

```
V 2.0436v19.1 , 18-10-04 , RM-1 , (c) NOKIA. / V 2.39.126 , 18-10-04 , RM-1 , (c)
```

Figure 21 Product support module information (example from RM-1)

■ Installing flash support files for FPS-8 and FPS-10

Before you begin

- Install Phoenix Service SW.
- Install phone model specific data package for Phoenix.
- If you want to update the flash support files, they are delivered in the same installation package with Phoenix or newer Phoenix packages beginning from December 2004. In case you want to update the MCU files, install the latest data package (see Technical Bulletins for information on the latest one). However, normally it is enough to install Phoenix and the phone-specific data package because the Phoenix installation always includes the latest flash update package files for FPS-8 and FPS-10.
- A separate installation package for flash support files is available, and the files can be updated according to this instruction if updates appear between Phoenix/data package releases.

Context

If you are not using a separate installation package, you can skip this section and continue with [Updating FPS-8 and FPS-10 flash prommer software \(Page 1–22\)](#) after installing a new phone data package.

Steps

1. To begin the installation, double-click the flash update file (for example, *flash_update_03_183_0014.exe*).

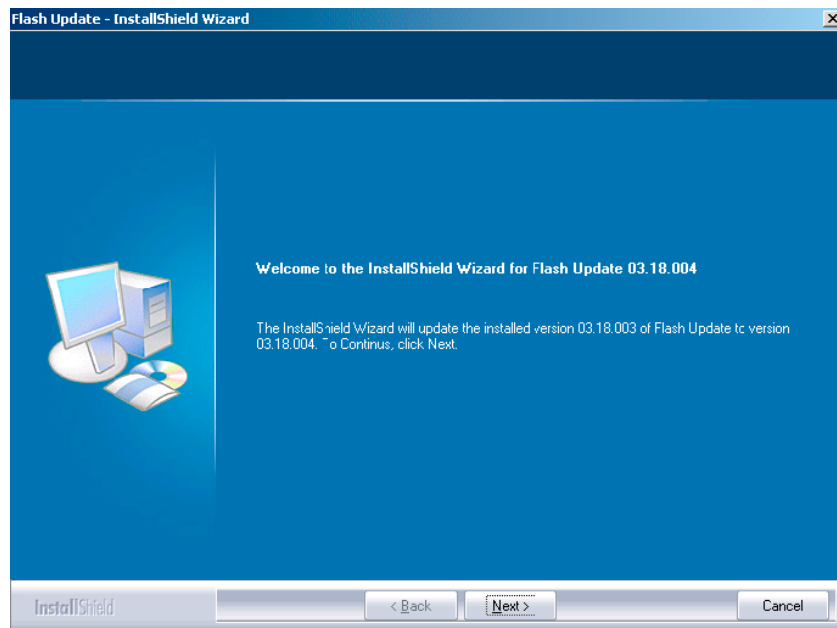


Figure 22 Flash update welcome dialog

- If the same version of Flash Update package already exists, and you want to reinstall it, the previous package is first uninstalled. Restart installation again after uninstallation.
2. If you try to downgrade the existing version to older ones, the setup will be aborted. If there is a need to downgrade the version, uninstall newer files manually from the Windows Control Panel and then rerun the installation.

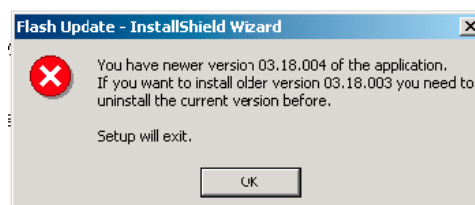


Figure 23 Flash installation interrupted

If an older version exists on your PC and it needs to be updated, click Next to continue installation.

3. It is highly recommended to install the files to the default destination folder *C:\Program Files\Nokia\Phoenix*. To continue, click Next.

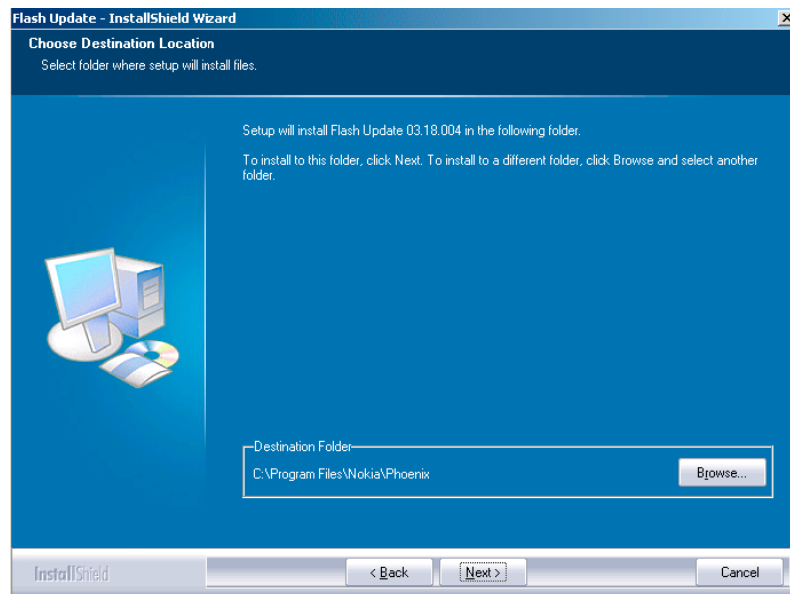


Figure 24 Flash destination folder

When installing the flash update files for the first time, you may choose another location by selecting Browse (not recommended).

4. To complete the installation procedure, click Finish .

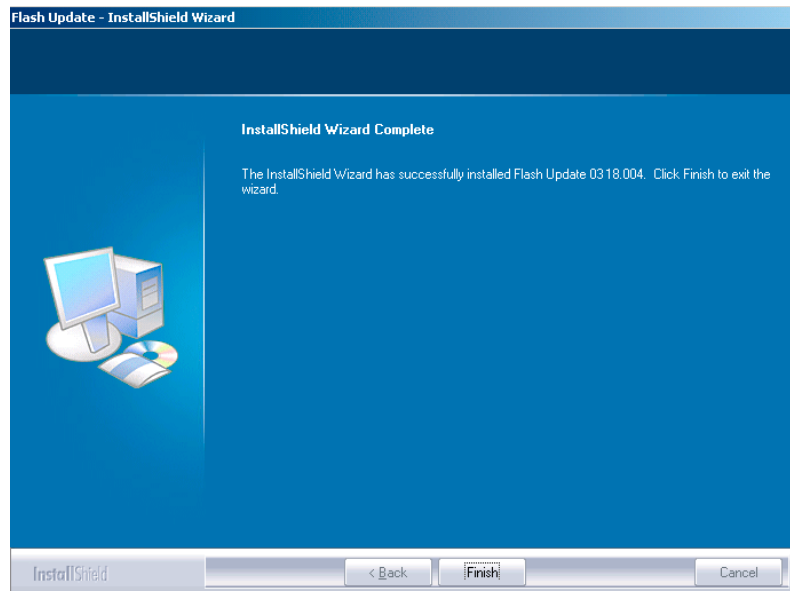


Figure 25 Finish flash update

Next action

FPS-8 and FPS-10 flash prommers must be updated using Phoenix!

■ Updating FPS-8 and FPS-10 flash prommer software

Steps

1. Start *Phoenix Service Software* and log in, manage connection correctly for your flash prommer.
2. Choose *Maintenance* → *Prommer maintenance*.

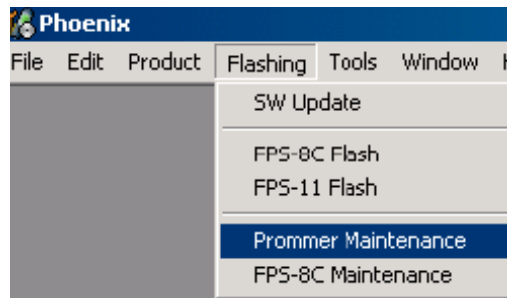


Figure 26 Choosing Prommer maintenance

3. When the new flash update package is installed to computer, you are asked to update the files to your prommer. To update the files, click Yes.
4. Wait until you are notified that the update has been successful; the procedure will take a couple of minutes. To close the *Prommer Maintenance* window, click OK.

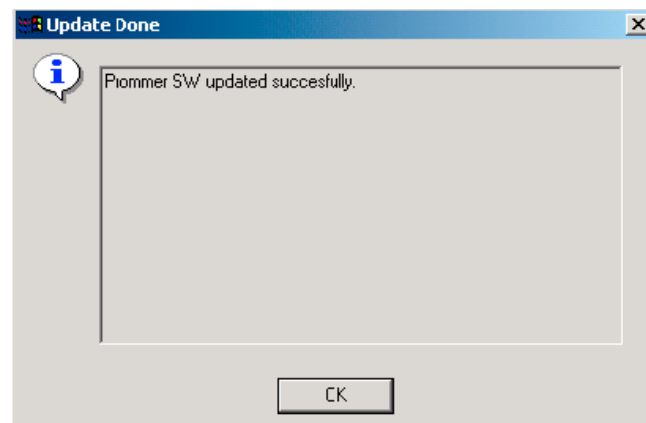


Figure 27 Prommer SW update finished

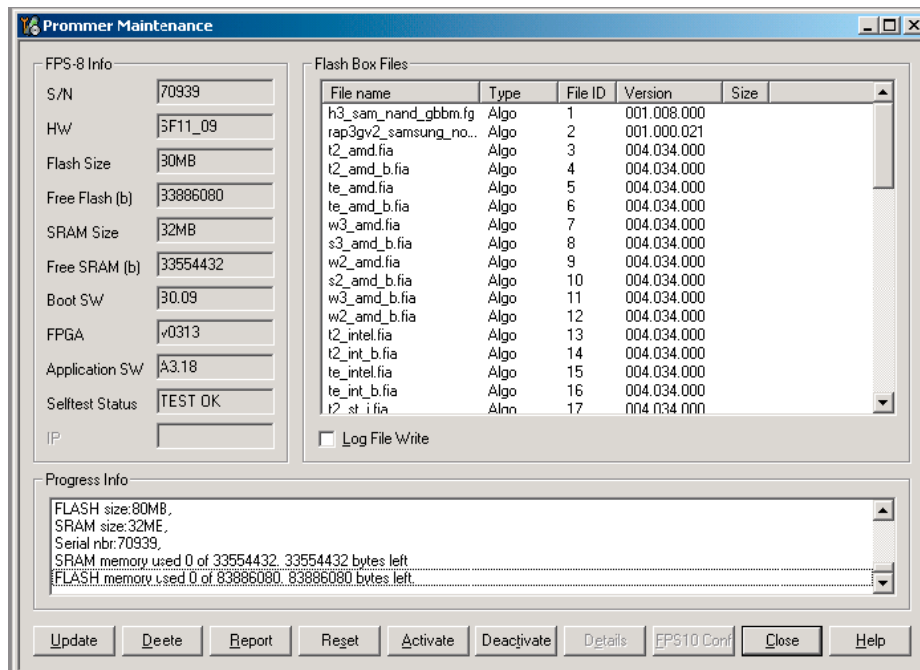


Figure 28 Prommer maintenance window

Alternative steps

- To update the **FPS-8** SW, click the Update button and select the appropriate *fps8upd.ini* file in *C:\Program Files\Nokia\Phoenix\Flash*.
- To update the **FPS-10** SW, click the Update button and select the appropriate *fpsxupd.ini* file in *C:\Program Files\Nokia\Phoenix\Flash*.

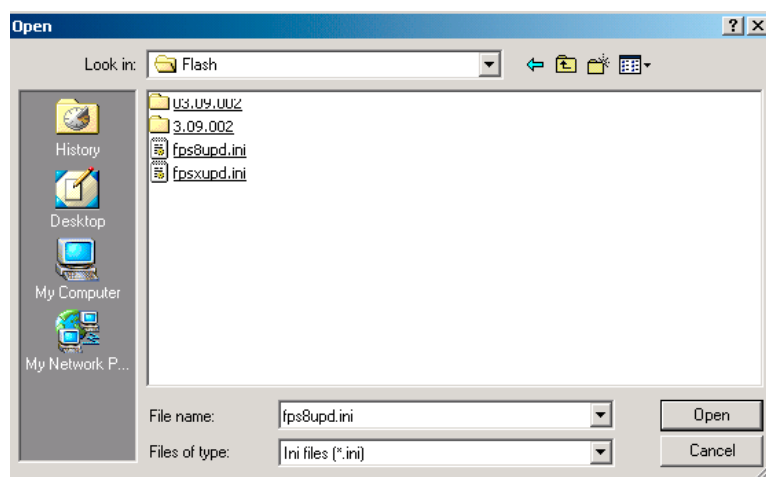


Figure 29 Flash directory window

- All files can be loaded separately to the prommer used. To do this, click the right mouse button in the *Flash box files* window and select the file type to be loaded.
More information can be found in the Phoenix Help.

■ Activating FPS-8

Context

Before FPS-8 can be successfully used for phone programming, it must first be activated.

First fill in the *FPS-8 activation request* sheet in the FPS-8 sales package and follow the instructions given. When activation file is received (for example, *00000.in*), copy it to the *C:\ProgramFiles\Nokia\Phoenix\BoxActivation* directory on your computer (this directory is created when Phoenix is installed).

Steps

1. Start *Phoenix Service Software*.
2. Choose *Maintenance* → *Prommer Maintenance*.

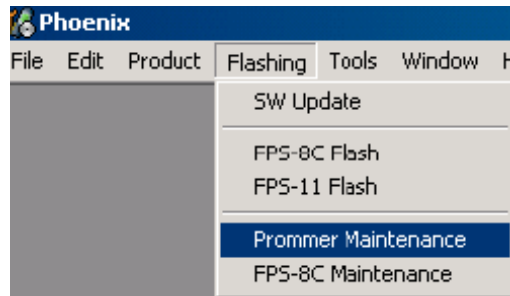


Figure 30 Prommer maintenance

3. In the *Prommer Maintenance* window, click *Activate*.
4. To find the activation file if you saved it to some other directory on your PC, click *Browse*.
5. To activate the prommer, select the activation file and click *Open*.

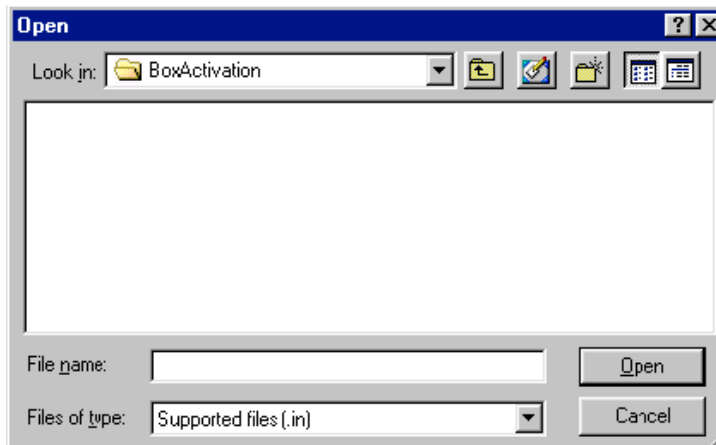


Figure 31 Box activation

6. To complete the activation, restart FPS-8.

■ Deactivating FPS-8

Context

If there is, for example, a need to send the FPS-8 box for repair, it must be deactivated first.

Steps

1. Start *Phoenix Service Software*.
2. Choose *Maintenance* → *Prommer Maintenance*.
3. In the *Prommer Maintenance* window, click *Deactivate*.

4. To confirm the deactivation, click Yes.

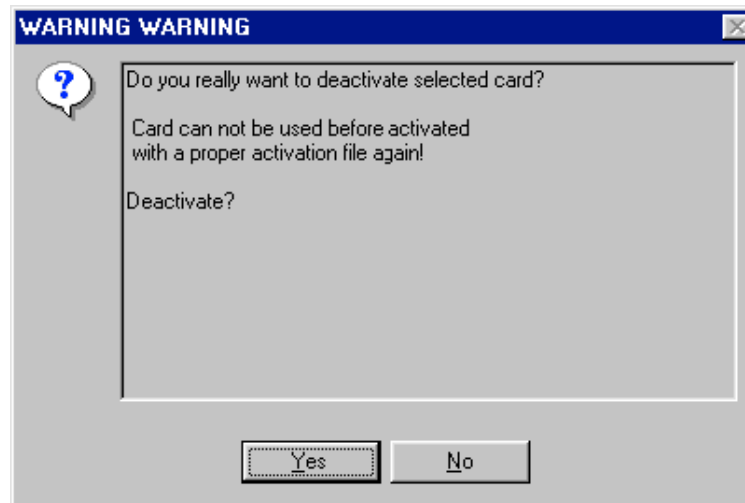


Figure 32 Deactivation warning

The box is deactivated.

5. To complete the deactivation, restart FPS-8.

(This page left intentionally blank.)