

2 — Parts Lists and Component Layouts

(This page left intentionally blank.)

Table of Contents

Exploded view.....	1-5
Spare parts overview.....	1-6
Parts lists.....	1-7
RM-84 mechanical spare parts lists.....	1-7
Component parts lists.....	1-8
Component layouts.....	1-53

List of Tables

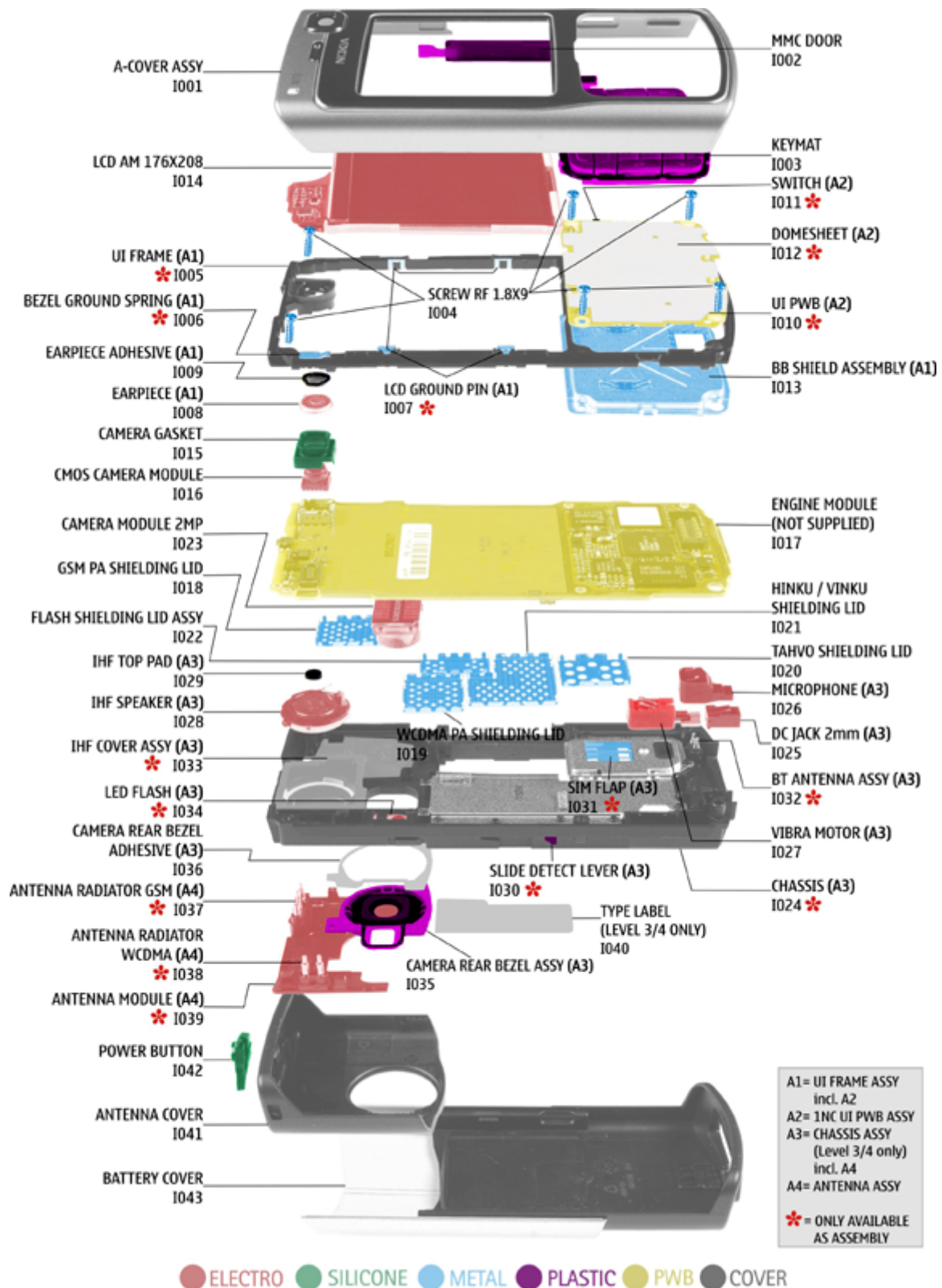
Table 1 RM-84 component parts list (1MV_15).....	1-8
Table 2 RM-99 component parts list (1PP_15).....	1-24

List of Figures

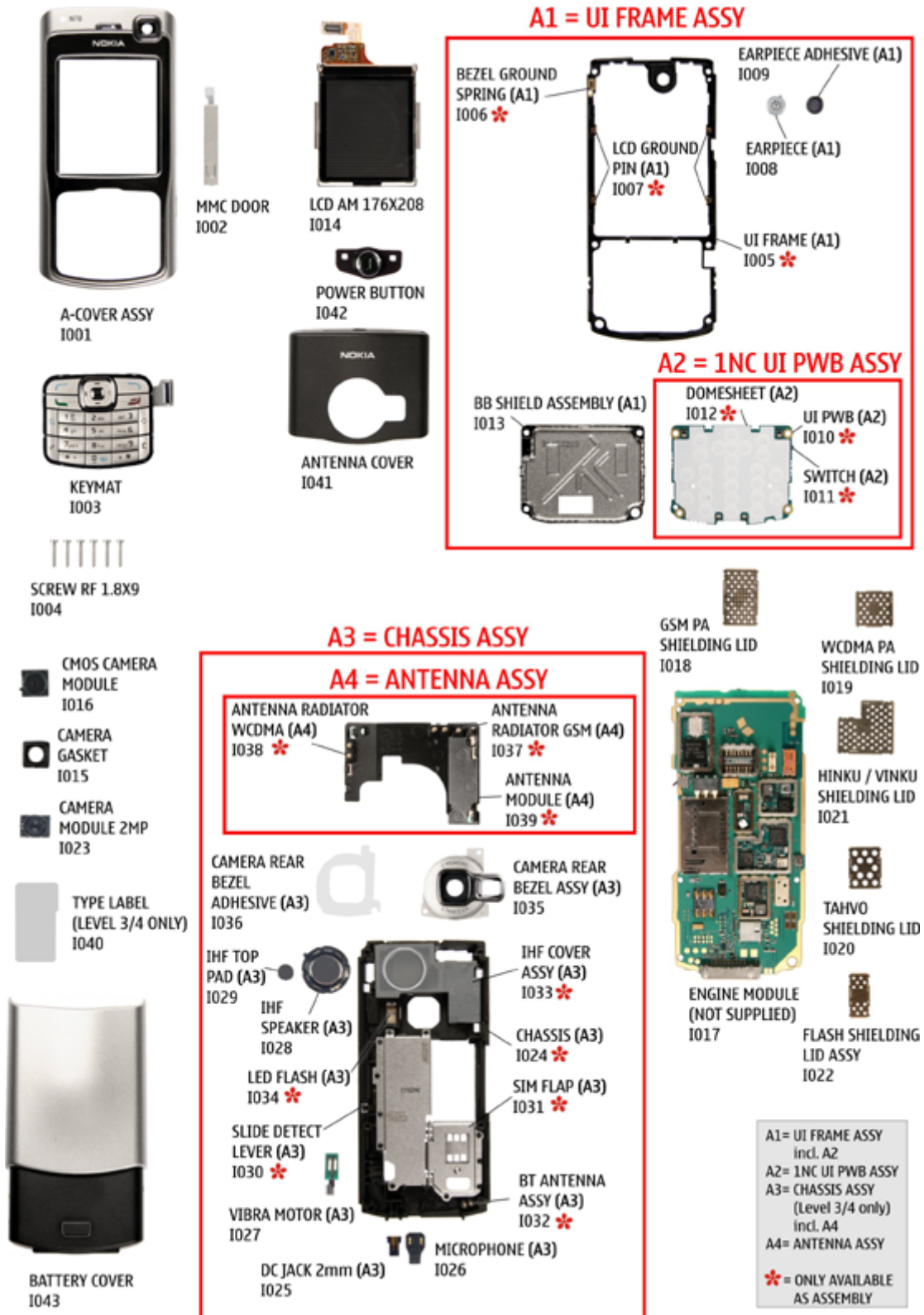
Figure 1 RM-84 component layout - bottom view (1MV_15).....	1-53
Figure 2 RM-84 component layout - top view (1MV_15).....	1-54
Figure 3 RM-99 component layout - bottom view (1PP_15).....	1-54
Figure 4 RM-99 component layout - top view (1PP_15).....	1-55

(This page left intentionally blank.)

■ Exploded view



■ Spare parts overview



■ Parts lists

RM-84 mechanical spare parts lists

Note: For Nokia product codes, please refer to the latest Service Bulletins on the Partner Website (PWS).

To ensure you are always using the latest codes, please check the PWS on a daily basis.

Bold = ASSY

ITEM/ CIRCUIT REF.	QTY	PART NAME
I001	1	A COVER ASSY
I002	1	MMC DOOR
I003	1	KEYMAT
I004	6	SCREW RF 1.8X9
	1	UI FRAME ASSY
I005	1	UI FRAME
I006	1	BEZEL GROUND SPRING
I007	4	LCD GROUND PIN
I008	1	EARPIECE
I009	1	EARPIECE ADHESIVE
	1	1NC UI PWB ASSY
I010	1	UI PWB
I011	1	SWITCH
I012	1	DOMESHEET
I013	1	BB SHIELD ASSEMBLY
I014	1	LCD AM 176X208
I015	1	CAMERA GASKET
I016	1	CMOS CAMERA MODULE
I017	1	ENGINE MODULE
I018	1	GSM PA SHIELDING LID
I019	1	WCDMA PA SHIELDING LID
I020	1	TAHVO SHIELDING LID
I021	1	HINKU / VINKU SHIELDING LID
I022	1	FLASH SHIELDING LID ASSY
I023	1	CAMERA MODULE 2MP
	1	CHASSIS ASSY
I024	1	CHASSIS

ITEM/ CIRCUIT REF.	QTY	PART NAME
I025	1	DC JACK 2mm
I026	1	MICROPHONE
I027	1	VIBRA MOTOR
I028	1	IHF SPEAKER
I029	1	IHF TOP PAD
I030	1	SLIDE DETECT LEVER
I031	1	SIM FLAP
I032	1	BT ANTENNA ASSY
I033	1	IHF COVER ASSY
I034	1	LED FLASH
I035	1	CAMERA REAR BEZEL ASSY
I036	1	CAMERA REAR BEZEL ADHESIVE
	1	ANTENNA ASSY
I037	1	ANTENNA RADIATOR GSM
I038	1	ANTENNA RADIATOR WCDMA
I039	1	ANTENNA MODULE
I040	1	TYPE LABEL
I041	1	ANTENNA COVER
I042	1	POWER BUTTON
I043	1	BATTERY COVER

Component parts lists

Table 1 RM-84 component parts list (1MV_15)

Note: For Nokia product codes, please refer to the latest Service Bulletins on the Partner Website (PWS).

To ensure you are always using the latest codes, please check the PWS on a daily basis.

BTM = Bottom

Item	Side	Grid ref.	Description and value	Type
A7003	BTM	D 10	SHIELD RM-84 RF	~ SHIELD_RM-84_RF
A7004	BTM	B 7	SHIELD RM-84 VCO	~ SHIELD_RM-84_VCO
A7005	BTM	E 12	SHIELD RM-84 GSM FLASH	~ SHIELD_RM-84_FLASH
A7006	BTM	D 6	SHIELD RM-84 TAHVO	~ SHIELD_RM-84_TAHVO
A7007	BTM	C 13	SHIELD RM-84 GSM WCDMA PA	~ SHIELD_RM-84_WCDMA_PA
A7008	BTM	H 17	SHIELD RM-84 GSM PA	~ SHIELD_RM-84_GSM_PA
B2200	Top	D 6	CRYSTAL 32.768KHZ +-20PPM 12.5PF	32.768k Hz CRYSTAL_3.3X1.6_H0.9

Item	Side	Grid ref.		Description and value	Type
C1470	BTM	D	15	CHIPCAP X5R 1U K 6V3 0603	1u0 0603C
C1471	BTM	F	18	CHIPCAP X5R 1U K 6V3 0603	1u0 0603C
C1472	BTM	F	6	CHIPCAP X5R 1U K 6V3 0603	1u0 0603C
C1473	BTM	G	7	CHIPCAP X5R 1U K 6V3 0603	1u0 0603C
C1476	Top	I	19	Chipcap 5% NP0	27p 0402C
C1477	Top	G	19	CHIPCAP X5R 100N M 16V 0402	100n 0402C_H0.6
C1478	Top	I	19	CHIPCAP X5R 100N M 16V 0402	100n 0402C_H0.6
C1479	BTM	E	14	CHIPCAP X5R 1U K 6V3 0603	1u0 0603C
C1480	BTM	D	14	CHIPCAP X5R 1U K 6V3 0603	1u0 0603C
C1481	Top	D	20	CHIPCAP X5R 100N M 16V 0402	100n 0402C_H0.6
C1482	Top	D	20	CHIPCAP X5R 100N M 16V 0402	100n 0402C_H0.6
C1483	Top	E	6	CHIPCAP X5R 100N M 16V 0402	100n 0402C_H0.6
C1484	BTM	E	12	CHIPCAP X5R 4U7 K 6V3 0805	4u7 0805C
C1485	BTM	E	13	CHIPCAP 2U2 K 25V 1206	2u2 1206C_H1.8
C1486	BTM	E	13	CHIPCAP X5R 100N M 16V 0402	100n 0402C_H0.6
C1487	BTM	C	15	Chipcap 5% NP0	10p 0402C
C1488	BTM	C	15	Chipcap 5% NP0	10p 0402C
C1489	Top	E	19	Chipcap 5% NP0	22p 0402C
C1490	Top	E	20	Chipcap 5% NP0	22p 0402C
C1491	Top	D	19	Chipcap 5% NP0	22p 0402C
C2000	BTM	C	3	Chipcap 5% NP0	27p 0402C
C2002	BTM	F	3	CHIPCAP X5R 2U2 K 6V3 0603	2u2 0603C
C2003	BTM	F	3	CERCAP X7R 22N K 16V 0402	22n 0402C
C2004	BTM	G	3	CERCAP X7R 22N K 16V 0402	22n 0402C
C2005	BTM	F	2	Chipcap X7R 10% 16V 0402	10n 0402C
C2006	BTM	G	2	Chipcap X7R 10% 16V 0402	10n 0402C
C2007	BTM	G	2	Chipcap X7R 10% 16V 0402	10n 0402C
C2008	BTM	G	2	Chipcap X7R 10% 16V 0402	10n 0402C
C2009	BTM	G	2	Chipcap X7R 10% 16V 0402	10n 0402C
C2010	BTM	G	3	Chipcap X7R 10% 16V 0402	10n 0402C
C2011	Top	F	1	CHIPCAP NP0 270P J 25V 0402	270p 0402C
C2012	BTM	C	3	CHIPCAP X5R 1U K 25V 0603	1u0 0603C_H0.95
C2070	BTM	G	14	Chipcap 5% NP0	15p 0402C
C2072	BTM	I	15	Chipcap 5% NP0	15p 0402C
C2100	BTM	F	2	CHIPCAP X7R 15N K 16V 0402	15n 0402C

Item	Side	Grid ref.		Description and value		Type
C2101	BTM	F	2	CHIPCAP X7R 15N K 16V 0402	15n	0402C
C2102	BTM	F	2	CHIPCAP X5R 2U2 K 6V3 0603	2u2	0603C
C2103	Top	E	6	Chipcap 5% X7R	1n0	0402C
C2104	Top	E	6	Chipcap 5% X7R	1n0	0402C
C2105	Top	A	6	Chipcap X7R 10% 50V 0402	1n0	0402C
C2106	Top	A	6	Chipcap X7R 10% 50V 0402	1n0	0402C
C2107	Top	A	6	Chipcap X7R 10% 50V 0402	1n0	0402C
C2108	Top	B	6	Chipcap X7R 10% 50V 0402	1n0	0402C
C2109	Top	B	7	Chipcap X7R 10% 50V 0402	1n0	0402C
C2110	Top	A	7	Chipcap X7R 10% 50V 0402	1n0	0402C
C2200	Top	C	5	CHIPCAP X5R 1U K 6V3 0603	1u0	0603C
C2201	Top	C	7	CHIPCAP X5R 1U K 6V3 0603	1u0	0603C
C2202	Top	D	6	Chipcap X7R 10% 50V 0402	1n0	0402C
C2203	Top	D	6	Chipcap X7R 10% 50V 0402	1n0	0402C
C2204	Top	E	6	Chipcap X7R 10% 50V 0402	1n0	0402C
C2205	Top	D	5	Chipcap X7R 10% 50V 0402	1n0	0402C
C2206	Top	D	6	Chipcap X7R 10% 50V 0402	1n0	0402C
C2207	Top	E	6	Chipcap X7R 10% 50V 0402	1n0	0402C
C2208	Top	D	7	Chipcap 5% NP0	27p	0402C
C2209	Top	D	7	Chipcap 5% NP0	22p	0402C
C2210	Top	B	7	CHIPCAP X5R 1U K 16V 0603	1u0	0603C
C2211	Top	B	6	CHIPCAP X5R 4U7 K 10V 0805	4u7	0805C
C2212	Top	B	6	CHIPCAP X5R 1U K 6V3 0603	1u0	0603C
C2213	Top	C	7	CHIPCAP X5R 1U K 6V3 0603	1u0	0603C
C2214	Top	C	7	CHIPCAP X5R 1U K 6V3 0603	1u0	0603C
C2215	Top	C	7	CHIPCAP X5R 1U K 6V3 0603	1u0	0603C
C2216	Top	D	7	CHIPCAP X5R 1U K 6V3 0603	1u0	0603C
C2217	Top	D	7	CHIPCAP X5R 1U K 6V3 0603	1u0	0603C
C2219	Top	D	6	CHIPCAP X5R 1U K 6V3 0603	1u0	0603C
C2220	Top	B	6	CHIPCAP X5R 1U K 6V3 0603	1u0	0603C
C2221	Top	B	7	CHIPCAP X5R 1U K 6V3 0603	1u0	0603C
C2222	Top	B	6	CHIPCAP X5R 1U K 6V3 0603	1u0	0603C
C2223	Top	C	5	Chipcap X7R 10% 16V 0402	10n	0402C
C2224	Top	D	5	Chipcap X7R 10% 16V 0402	10n	0402C
C2225	Top	D	7	CHIPCAP X5R 1U K 6V3 0603	1u0	0603C

Item	Side	Grid ref.		Description and value	Type
C2226	Top	D	7	CHIPCAP X5R 1U K 6V3 0603	1u0 0603C
C2227	Top	B	7	CHIPCAP X5R 1U K 6V3 0603	1u0 0603C
C2228	Top	C	7	CHIPCAP X5R 1U K 6V3 0603	1u0 0603C
C2230	Top	D	7	CHIPCAP X5R 1U K 6V3 0603	1u0 0603C
C2231	Top	A	5	CHIPCAP X5R 10U M 6V3 0805	10U 0805C
C2232	Top	C	7	CHIPCAP X5R 1U K 6V3 0603	1u0 0603C
C2234	Top	D	6	Chipcap 5% NP0	27p 0402C
C2235	Top	D	6	Chipcap X7R 10% 50V 0402	1n0 0402C
C2237	Top	E	7	CHIPCAP X5R 1U K 6V3 0603	1u0 0603C
C2240	Top	B	2	Chipcap 5% NP0	12p 0402C
C2241	Top	G	3	Chipcap 5% NP0	12p 0402C
C2242	Top	E	5	Chipcap 5% NP0	12p 0402C
C2243	Top	I	3	Chipcap 5% NP0	12p 0402C
C2244	Top	G	1	Chipcap 5% NP0	12p 0402C
C2300	BTM	D	5	Chipcap X7R 10% 16V 0402	10n 0402C
C2301	BTM	D	6	CHIPCAP X5R 22U M 6V3 0805	22u 0805C
C2302	BTM	D	5	CHIPCAP X5R 22U M 6V3 0805	22u 0805C
C2303	BTM	D	7	CHIPCAP X5R 1U K 6V3 0603	1u0 0603C
C2304	BTM	C	6	Chipcap X7R 10% 16V 0402	10n 0402C
C2307	BTM	E	7	CHIPCAP X5R 2U2 K 6V3 0603	2u2 0603C
C2309	BTM	E	5	CHIPCAP X5R 22U M 6V3 0805	22u 0805C
C2312	BTM	E	7	CHIPCAP X5R 1U K 6V3 0603	1u0 0603C
C2313	BTM	E	7	CHIPCAP X5R 1U K 6V3 0603	1u0 0603C
C2314	Top	G	7	CHIPCAP X5R 4U7 M 25V 0805	4u7 0805C
C2315	Top	G	6	CHIPCAP X5R 4U7 M 25V 0805	4u7 0805C
C2316	BTM	C	6	Chipcap X7R 10% 50V 0402	1n0 0402C
C2700	BTM	H	7	CHIPCAP X5R 100N M 16V 0402	100n 0402C_H0.6
C2800	Top	H	3	CHIPCAP X5R 100N M 16V 0402	100n 0402C_H0.6
C2801	Top	H	5	CHIPCAP X5R 100N M 16V 0402	100n 0402C_H0.6
C2802	Top	I	3	CHIPCAP X5R 100N M 16V 0402	100n 0402C_H0.6
C2803	Top	I	5	CHIPCAP X5R 100N M 16V 0402	100n 0402C_H0.6
C2804	Top	G	4	CHIPCAP X5R 100N M 16V 0402	100n 0402C_H0.6
C2805	Top	G	3	CHIPCAP X5R 100N M 16V 0402	100n 0402C_H0.6
C2806	Top	G	5	CHIPCAP X5R 100N M 16V 0402	100n 0402C_H0.6
C2807	Top	H	5	CHIPCAP X5R 1U K 6V3 0603	1u0 0603C

Item	Side	Grid ref.		Description and value		Type
C2808	Top	G	4	CHIPCAP X5R 100N M 16V 0402	100n	0402C_H0.6
C2809	Top	H	5	CHIPCAP X5R 100N M 16V 0402	100n	0402C_H0.6
C2810	Top	G	5	CHIPCAP X5R 100N M 16V 0402	100n	0402C_H0.6
C2811	Top	I	5	CHIPCAP X5R 100N M 16V 0402	100n	0402C_H0.6
C2812	Top	H	3	CHIPCAP X5R 100N M 16V 0402	100n	0402C_H0.6
C2813	Top	I	3	CHIPCAP X5R 100N M 16V 0402	100n	0402C_H0.6
C2814	Top	I	3	CHIPCAP X5R 100N M 16V 0402	100n	0402C_H0.6
C3000	Top	G	7	CHIPCAP X5R 100N M 16V 0402	100n	0402C_H0.6
C3001	Top	I	5	CHIPCAP X5R 100N M 16V 0402	100n	0402C_H0.6
C3002	Top	G	6	CHIPCAP X5R 100N M 16V 0402	100n	0402C_H0.6
C3003	Top	I	5	Chipcap X7R 10% 16V 0402	10n	0402C
C3004	Top	H	1	CHIPCAP X5R 100N M 16V 0402	100n	0402C_H0.6
C3005	Top	I	1	CHIPCAP X5R 100N M 16V 0402	100n	0402C_H0.6
C3006	Top	I	2	CHIPCAP X5R 100N M 16V 0402	100n	0402C_H0.6
C3007	Top	H	1	Chipcap X7R 10% 16V 0402	10n	0402C
C3008	Top	I	2	CHIPCAP X5R 100N M 16V 0402	100n	0402C_H0.6
C4200	Top	D	2	CHIPCAP X5R 22U M 6V3 0805	22u	0805C
C4201	Top	D	1	CHIPCAP X5R 22U M 6V3 0805	22u	0805C
C4203	Top	B	2	CHIPCAP X5R 1U K 6V3 0603	1u0	0603C
C4204	Top	C	2	Chipcap 5% NP0	100p	0402C
C4205	Top	B	5	CHIPCAP X5R 1U K 6V3 0603	1u0	0603C
C4206	Top	B	1	CHIPCAP X5R 1U K 6V3 0603	1u0	0603C
C4400	Top	D	19	CHIPCAP X5R 1U K 6V3 0603	1u0	0603C
C4401	Top	D	19	CHIPCAP X5R 1U K 6V3 0603	1u0	0603C
C4402	Top	D	19	Chipcap 5% NP0	27p	0402C
C4800	Top	D	4	CHIPCAP X5R 100N M 16V 0402	100n	0402C_H0.6
C4801	Top	E	2	CHIPCAP X5R 1U K 6V3 0603	1u0	0603C
C4802	Top	G	5	CHIPCAP X5R 100N M 16V 0402	100n	0402C_H0.6
C4803	Top	G	5	CHIPCAP X5R 100N M 16V 0402	100n	0402C_H0.6
C4804	Top	E	5	CHIPCAP X5R 100N M 16V 0402	100n	0402C_H0.6
C4805	Top	G	3	CHIPCAP X5R 100N M 16V 0402	100n	0402C_H0.6
C4806	Top	E	3	CHIPCAP X5R 100N M 16V 0402	100n	0402C_H0.6
C4807	Top	D	4	CHIPCAP X5R 100N M 16V 0402	100n	0402C_H0.6
C4808	Top	G	3	CHIPCAP X5R 100N M 16V 0402	100n	0402C_H0.6
C4809	Top	G	4	CHIPCAP X5R 100N M 16V 0402	100n	0402C_H0.6

Item	Side	Grid ref.		Description and value	Type	
C4810	Top	F	3	CHIPCAP X5R 100N M 16V 0402	100n	0402C_H0.6
C4811	Top	E	3	CHIPCAP X5R 100N M 16V 0402	100n	0402C_H0.6
C4812	Top	E	5	CHIPCAP X5R 100N M 16V 0402	100n	0402C_H0.6
C4813	Top	G	4	Chipcap X7R 10% 50V 0402	1n0	0402C
C4814	Top	E	6	Chipcap 5% NP0	22p	0402C
C5000	Top	B	2	CHIPCAP X5R 100N M 16V 0402	100n	0402C_H0.6
C5001	Top	D	3	CHIPCAP X5R 100N M 16V 0402	100n	0402C_H0.6
C5002	Top	D	4	CHIPCAP X5R 100N M 16V 0402	100n	0402C_H0.6
C5003	Top	B	2	CHIPCAP X5R 100N M 16V 0402	100n	0402C_H0.6
C5004	Top	D	3	CHIPCAP X5R 100N M 16V 0402	100n	0402C_H0.6
C5005	Top	D	5	CHIPCAP X5R 100N M 16V 0402	100n	0402C_H0.6
C5200	BTM	H	7	CHIPCAP X5R 1U K 6V3 0603	1u0	0603C
C7501	BTM	C	11	Chipcap 5% NP0	18p	0402C
C7503	BTM	C	11	CHIPCAP X5R 1U K 6V3 0603	1u0	0603C
C7504	BTM	C	11	CHIPCAP X5R 1U K 6V3 0603	1u0	0603C
C7505	BTM	B	11	CHIPCAP X5R 100N M 16V 0402	100n	0402C_H0.6
C7507	BTM	C	10	Chipcap 5% NP0	18p	0402C
C7508	BTM	B	10	Chipcap 5% NP0	18p	0402C
C7509	BTM	C	11	Chipcap +/-0.25pF NP0	2p7	0402C
C7512	BTM	G	19	Chipcap 5% NP0	39p	0402C
C7513	BTM	B	11	Chipcap X7R 10% 25V 0402	4n7	0402C
C7514	BTM	G	19	Chipcap 5% NP0	39p	0402C
C7515	BTM	C	9	Chipcap 5% NP0	10p	0402C
C7516	BTM	C	9	Chipcap 5% NP0	150p	0402C
C7518	BTM	E	9	CHIPCAP X5R 100N M 16V 0402	100n	0402C_H0.6
C7520	BTM	C	11	Chipcap 5% NP0	18p	0402C
C7522	BTM	C	9	Chipcap 5% NP0	150p	0402C
C7523	BTM	G	18	Chipcap +/-0.25pF NP0	5p6	0402C
C7524	BTM	B	9	CHIPCAP NP0 2N2 G 16V 0603	2n2	0603C
C7525	BTM	G	18	Chipcap +/-0.25pF NP0	5p6	0402C
C7527	BTM	B	10	Chipcap 5% NP0	100p	0402C
C7528	BTM	B	10	Chipcap 5% NP0	22p	0402C
C7529	BTM	D	9	Chipcap 5% NP0	100p	0402C
C7530	BTM	B	11	Chipcap X7R 10% 16V 0402	8n2	0402C
C7531	BTM	C	10	Chipcap 5% NP0	22p	0402C

Item	Side	Grid ref.		Description and value		Type
C7532	BTM	B	11	Chipcap X7R 10% 16V 0402	8n2	0402C
C7533	BTM	C	8	CERCAP X7R 22N K 16V 0402	22n	0402C
C7534	BTM	B	11	Chipcap X7R 10% 16V 0402	8n2	0402C
C7536	BTM	B	11	Chipcap X7R 10% 16V 0402	8n2	0402C
C7541	BTM	D	9	CHIPCAP X5R 1U K 6V3 0603	1u0	0603C
C7543	BTM	E	10	CHIPCAP X5R 1U K 6V3 0603	1u0	0603C
C7545	BTM	I	17	Chipcap +-0.25pF NP0	4p7	0402C
C7547	BTM	D	9	Chipcap +-0.25pF NP0	1p8	0402C
C7548	BTM	D	8	CHIPCAP X5R 1U K 6V3 0603	1u0	0603C
C7549	BTM	D	9	Chipcap 5% NP0	100p	0402C
C7550	BTM	E	8	Chipcap +-0.25pF NP0	2p7	0402C
C7552	BTM	D	8	Chipcap +-0.25pF NP0	2p7	0402C
C7553	BTM	D	8	Chipcap X7R 10% 16V 0402	8n2	0402C
C7554	BTM	B	6	Chipcap +-0.25pF NP0	4p7	0402C
C7555	BTM	B	6	CHIPCAP NP0 0P5 C 50V 0402	0p5	0402C
C7556	BTM	G	16	Chipcap 5% NP0	10p	0402C
C7558	BTM	E	10	Chipcap 5% X7R	1n0	0402C
C7559	BTM	I	18	Chipcap +-0.25pF NP0	1p0	0402C
C7560	BTM	E	9	Chipcap X7R 10% 25V 0402	4n7	0402C
C7561	BTM	G	17	Chipcap +-0.25pF NP0	4p7	0402C
C7563	BTM	G	17	Chipcap +-0.25pF NP0	4p7	0402C
C7564	BTM	H	18	Chipcap 5% X7R	1n0	0402C
C7567	BTM	E	10	Chipcap 5% NP0	15p	0402C
C7568	BTM	E	8	Chipcap 5% NP0	150p	0402C
C7569	BTM	G	17	CHIPCAP X5R 4U7 K 6V3 0603	4u7	0603C
C7570	BTM	E	9	Chipcap 5% NP0	18p	0402C
C7571	BTM	B	6	CHIPCAP NP0 330P J 50V 0402	330p	0402C
C7573	BTM	A	6	CHIPCAP NP0 2N2 G 16V 0603	2n2	0603C
C7575	BTM	E	10	Chipcap 5% NP0	15p	0402C
C7577	BTM	E	10	Chipcap 5% NP0	15p	0402C
C7579	BTM	A	13	Chipcap 5% NP0	10p	0402C
C7580	BTM	A	14	CHIPCAP X5R 1U K 6V3 0603	1u0	0603C
C7581	BTM	G	19	Chipcap 5% NP0	39p	0402C
C7582	BTM	D	9	Chipcap 5% NP0	100p	0402C
C7583	BTM	D	13	CHIPCAP X5R 4U7 K 6V3 0603	4u7	0603C

Item	Side	Grid ref.		Description and value		Type
C7584	BTM	G	18	Chipcap 5% NP0	39p	0402C
C7585	BTM	B	13	CHIPCAP NP0 1P0 B 50V 0402	1p0	0402C
C7586	BTM	B	14	Chipcap 5% NP0	10p	0402C
C7587	BTM	C	14	Chipcap 5% NP0	10p	0402C
C7589	BTM	D	13	CHIPCAP X5R 4U7 K 6V3 0603	4u7	0603C
C7590	BTM	C	13	Chipcap 5% NP0	10p	0402C
C7591	BTM	C	13	CHIPCAP NP0 470P J 6V3 0402	470p	0402C
C7592	BTM	C	12	Chipcap 5% X7R	3n3	0402C
C7593	BTM	G	16	CHIPCAP X5R 4U7 K 6V3 0603	4u7	0603C
C7596	BTM	C	11	Chipcap +-0.25pF NP0	2p7	0402C
C7597	BTM	F	14	CHIPTCAP 100U M 14V 6X3.2X2	100u_14 V	TANT_6.3X3.5_H2.0
C7598	BTM	B	8	CHIPCAP NP0 0P5 C 50V 0402	0p5	0402C
C7599	Top	D	20	CHIPCAP X7R 33N K 10V 0402	33n	0402C
C7600	Top	B	20	CHIPCAP X5R 2U2 K 6V3 0603	2u2	0603C
C7601	Top	B	20	CHIPCAP X5R 2U2 K 6V3 0603	2u2	0603C
C7602	Top	B	2	Chipcap 5% NP0	12p	0402C
C7604	BTM	F	3	CHIPCAP X5R 100N K 10V 0402	100n	0402C
C7605	BTM	F	3	CHIPCAP X5R 100N K 10V 0402	100n	0402C
C7606	BTM	H	2	Chipcap 5% NP0	10p	0402C
C7607	BTM	H	2	Chipcap 5% NP0	10p	0402C
C7608	BTM	H	2	Chipcap 5% NP0	10p	0402C
C7609	BTM	G	2	Chipcap 5% NP0	10p	0402C
C7612	BTM	C	4	CHIPCAP X5R 100N K 10V 0402	100n	0402C
C7613	BTM	F	3	CHIPCAP X5R 100N K 10V 0402	100n	0402C
C7614	BTM	D	11	CHIPCAP NP0 1P0 B 50V 0402	1p0	0402C
C7615	BTM	C	9	Chipcap +-0.25pF NP0	4p7	0402C
C7616	BTM	F	3	Chipcap X7R 10% 16V 0402	10n	0402C
C7617	BTM	F	3	Chipcap 5% NP0	100p	0402C
C7618	BTM	F	3	CHIPCAP X5R 100N M 16V 0402	100n	0402C_H0.6
D2800	Top	H	4	RAP3G V2.20E-PA UMC8D F761800F 12C027	~	uBGA_289
D3000	Top	H	7	FLASH 4MX16 1.8/1.8V FBGA44	4Mx16	PBFREEBGA40_64MB_54MHZ_ MAX
D3001	Top	H	2	SDRAM 4MX16 1.8V/1.8V WBGA60	4Mx16	SDRAM_110MHZ_64MBIT_BGA 60_PBFREE_MAX

Item	Side	Grid ref.		Description and value		Type
D4800	Top	E	4	HELEN3 PS1.1E F761991A C027 UBGA289	~	uBGA_289
D5000	Top	B	4	COMBO 512M DDR +512MNAND FBGA133 PBFREE	32Mx16/ 64Mx8	FBGA133
D5001	BTM	D	4	BTHFM1.0_ES3.6 MODULE	~	LGA_BTHFM_ES3.6
F2000	BTM	C	2	SM FUSE F 2.0A 32V	2A	0603_FUSE_AVX2MATS
G2200	Top	F	6	CELL CAPACITOR 0.01MAH 3V3	3V3	BATTER_RB414H
G7500	BTM	B	9	VCO 3610-4340MHZ 2.7V 17MA	3610- 4340MH z	VCO_RXUVCU
G7501	BTM	C	9	VCTCX0 38.4MHZ 2.5V	38.4MHz	VCTCX0_KT21P2
G7502	BTM	B	7	VCO 3296-3980MHZ 2.7V 20MA EGSM	3296- 3980MH z	VCO_ENFVZ7Q95
L1473	BTM	E	11	CHOKE 3.3UH 0R252 0A82 310 CASE SIZE	3u3H	CHOKE_SER300
L1474	Top	E	7	FERR.BEAD 0R03 42R/100MHZ 3A 0805	42R/ 100MHz	0805_BLM21
L1479	BTM	C	15	CHIP COIL 27N J Q27/800M 0402	27nH	0402L
L1480	BTM	C	15	CHIP COIL 27N J Q27/800M 0402	27nH	0402L
L2000	BTM	C	2	FERR.BEAD 220R/100M 2A 0R05 0603	220R/ 100MHz	0603_BLM
L2001	BTM	F	2	CHIP BEAD ARRAY 2X1000R 0405	2x1000R /100MHz	0405_2_MATSU
L2002	BTM	G	2	CHIP BEAD ARRAY 2X1000R 0405	2x1000R /100MHz	0405_2_MATSU
L2003	BTM	G	2	CHIP BEAD ARRAY 2X1000R 0405	2x1000R /100MHz	0405_2_MATSU
L2100	Top	E	19	CHIP BEAD ARRAY 2X1000R 0405	2x1000R /100MHz	0405_2_MATSU
L2101	Top	B	6	FERR.BEAD 220R/100M 2A 0R05 0603	220R/ 100MHz	0603_BLM
L2102	BTM	F	18	CHIP COIL 56N J Q38/250MHZ 0603	56nH	COIL_0603CS
L2103	BTM	F	18	CHIP COIL 56N J Q38/250MHZ 0603	56nH	COIL_0603CS
L2104	Top	B	6	FERR.BEAD 220R/100M 2A 0R05 0603	220R/ 100MHz	0603_BLM

Item	Side	Grid ref.		Description and value	Type
L2105	Top	B	6	FERRITE BEAD 220R 0R45 0.3A 0402	220R/ 100MHz 0402L_XL
L2106	Top	A	6	FERRITE BEAD 220R 0R45 0.3A 0402	220R/ 100MHz 0402L_XL
L2202	Top	E	7	FERR.BEAD 220R/100M 2A 0R05 0603	220R/ 100MHz 0603_BLM
L2203	Top	C	7	FERRITE BEAD 0.6R 600R/ 100MHZ 0402	600R/ 100MHz FERRITE_0402
L2204	Top	D	7	FERRITE BEAD 0.6R 600R/ 100MHZ 0402	600R/ 100MHz FERRITE_0402
L2205	Top	B	5	FERR.BEAD 220R/100M 2A 0R05 0603	220R/ 100MHz 0603_BLM
L2206	Top	B	7	FERRITE BEAD 0.6R 600R/ 100MHZ 0402	600R/ 100MHz FERRITE_0402
L2301	BTM	E	6	FERR.BEAD 220R/100M 2A 0R05 0603	220R/ 100MHz 0603_BLM
L2302	BTM	D	5	CHOKE 10U 0.8A 0R24 4X4X1.8	10uH CHOKE_SER400
L2304	Top	G	7	CHOKE 22U M 1R4 0.33A 3.3X3.3X1.5	22uH CHOKE_984FB
L4200	Top	C	2	CHOKE 10U 0.8A 0R24 4X4X1.8	10uH CHOKE_SER400
L4201	Top	E	2	FERR.BEAD 220R/100M 2A 0R05 0603	220R/ 100MHz 0603_BLM
L4400	Top	D	19	FERRITE BEAD 0.6R 600R/ 100MHZ 0402	600R/ 100MHz FERRITE_0402
L4401	Top	D	19	FERRITE BEAD 0.6R 600R/ 100MHZ 0402	600R/ 100MHz FERRITE_0402
L5200	BTM	H	7	FERRITE BEAD 0.6R 600R/ 100MHZ 0402	600R/ 100MHz FERRITE_0402
L7502	BTM	D	8	CHIP COIL 100N J Q16/300M 0402	100nH 0402L
L7503	BTM	E	10	FERRITE BEAD 0.6R 600R/ 100MHZ 0402	600R/ 100MHz FERRITE_0402
L7504	BTM	H	19	CHIP COIL 47N J Q23/800MHZ 0402	47nH 0402L
L7506	BTM	H	18	CHIP COIL 12N J Q31/800M 0402	12nH 0402L
L7510	BTM	E	10	CHIP COIL 4N7 +-0N3 Q28/ 800M 0402	4n7H 0402L
L7511	BTM	D	10	CHIP COIL 10N J Q30/800M 0402	10nH 0402L

Item	Side	Grid ref.		Description and value	Type	
L7512	BTM	D	10	CHIP COIL 4N7 +-0N3 Q28/ 800M 0402	4n7H	0402L
L7514	BTM	B	13	CHIP COIL 5N6 +-0N3 Q28/ 800M 0402	5n6H	0402L
L7515	BTM	C	14	CHOKE 10U 0.8A 0R24 4X4X1.8	10uH	CHOKE_SER400
L7516	BTM	G	16	FERRITE BEAD 0.6R 600R/ 100MHZ 0402	600R/ 100MHz	FERRITE_0402
L7517	BTM	E	8	CHIP COIL 1N5 +-0N3 Q33/ 800M 0402	1n5H	0402L
L7518	BTM	G	3	CHIP COIL 68NH J Q12/100MHZ 0603	68nH	COIL_LK_1608
L7520	BTM	D	11	CHIP COIL 2N7+-0N3 Q29/ 800M 0402	2n7H	0402L
N1470	BTM	G	7	REG LP3990YDX-1.5V LLP-6	~	LLP6
N1471	BTM	E	13	STEP-UP DC/DC CONV SON3024-8	~	SON3024_8
N1472	BTM	E	14	VREG LP3985ITLX-2.8 NOPB USMD5	~	USMD5_1.47X1.04_H0.675
N1474	Top	D	20	14XLEVEL SHIFTER ST16C32245TBR uTFBGA42	~	TFBGA_42
N2200	Top	C	6	RETU 3.02 TSA1GJWE TFBGA108	~	TFBGA_108
N2300	BTM	D	7	TAHVO V4.1 LEADFREE TFBGA84 6X6	~	TFBGA_84_6.15X6.15
N2301	Top	G	6	WHITE LED DRIVER 4LEDS 500MW 8BUMP USMD8	~	USMD8_1.69X1.69
N4200	Top	D	1	DC/DC CONV LM3661-1.40V/ 1.05V NOPB	~	USMD_10_2.458X1.899
N4201	Top	B	2	REG+ LP3999ITLX 1.8V 150MA NOPB	~	USMD5_1.468X1.036
N7500	BTM	C	11	RF ASIC HINKU310A TFBGA84	~	TFBGA_84_6.15X6.15
N7501	BTM	E	9	RF ASIC VINKU314A TFBGA64	~	TFBGA64_H1.2
N7502	BTM	H	17	PW AMP PF09014B_CUT5.3 QUADBAND	~	RITSA_PA_REL3
N7503	BTM	B	13	PW AMP PF57603B CUT8.1 1920-1980MHZ	~	PW_AMP_PF57603B
N7504	BTM	C	13	DC CONV SUPA LM2706 PBFREE	~	USMD10_2.534X2.026
N7505	Top	C	20	REG LP3981YDX 2.8/NOPB 0.3A LLP-6	~	LLP_6
R1470	Top	G	4	Resistor 5% 63mW	100R	0402R

Item	Side	Grid ref.		Description and value	Type	
R1471	Top	G	4	Resistor 5% 63mW	100R	0402R
R1472	Top	F	3	Resistor 5% 63mW	3k3	0402R
R1473	Top	F	3	Resistor 5% 63mW	3k3	0402R
R1474	Top	G	5	Resistor 5% 63mW	33R	0402R
R1475	BTM	F	7	Resistor 5% 63mW	470k	0402R
R1486	Top	E	20	Resistor 5% 63mW	15R	0402R
R1487	BTM	E	12	CHIPRES 0W06 6R8 J 0402	6R8	0402R
R1488	Top	D	19	Resistor 5% 63mW	33R	0402R
R1489	BTM	E	13	Resistor 5% 63mW	3k3	0402R
R1490	Top	E	20	Chipres 0W06 jumper 0402	0R	0402R
R1491	BTM	E	12	Resistor 5% 63mW	10k	0402R
R2000	BTM	F	3	Resistor 5% 63mW	220R	0402R
R2001	BTM	F	3	ASIP MIC W/ESD RES+CAP+ZDI BGA11	~	uBGA11_2.15X1.65
R2002	BTM	G	3	Resistor 5% 63mW	10R	0402R
R2003	BTM	G	3	Resistor 5% 63mW	10R	0402R
R2004	BTM	G	3	Resistor 5% 63mW	10R	0402R
R2005	BTM	H	3	Resistor 5% 63mW	10R	0402R
R2006	BTM	G	2	ASIP 4XESD **PB-FREE** BGA5	~	uBGA5
R2007	Top	F	1	ASIP SILIC USB OTG / ESD BGA11	~	uBGA11_1.6X2.15
R2009	Top	G	1	Resistor 5% 63mW	100R	0402R
R2010	Top	F	1	Resistor 5% 63mW	220k	0402R
R2011	Top	G	1	Resistor 5% 63mW	120k	0402R
R2070	BTM	G	14	CHIP VARISTOR VWM14V VC50V 0402	14V/50V	0402_VAR
R2071	Top	E	6	NTC RES 47K J B=4050+-3% 0402	47k	0402_NTH5
R2100	BTM	F	2	ASIP SINGLE ENDED MICROPHONE INTERF BGA8	~	FLIP_CHIP_8_1.7X1.7
R2101	BTM	E	2	Resistor 5% 63mW	220R	0402R
R2104	Top	E	19	CHIP VARISTOR VWM14V VC50V 0402	14V/50V	0402_VAR
R2105	Top	E	19	CHIP VARISTOR VWM14V VC50V 0402	14V/50V	0402_VAR
R2106	BTM	F	18	CHIP VARISTOR VWM14V VC50V 0402	14V/50V	0402_VAR

Item	Side	Grid ref.		Description and value		Type
R2107	BTM	F	18	CHIP VARISTOR VWM14V VC50V 0402	14V/50V	0402_VAR
R2200	Top	E	6	Resistor 5% 63mW	100k	0402R
R2201	Top	E	6	Resistor 5% 63mW	120k	0402R
R2202	Top	E	6	Resistor 5% 63mW	100R	0402R
R2205	Top	E	7	CHIPRES 0W06 2M2 J 0402	2M2	0402R
R2301	Top	G	6	Resistor 5% 63mW	4k7	0402R
R2302	Top	G	6	Resistor 5% 63mW	10k	0402R
R2303	Top	F	6	Resistor 5% 63mW	1k0	0402R
R2304	Top	F	6	Resistor 5% 63mW	39R	0402R
R2305	BTM	C	7	Resistor 5% 63mW	33R	0402R
R2700	BTM	I	6	ASIP SIM INTERFACE **LOW CAP**BGA8	~	uBGA8_1.47X1.47
R3000	Top	G	6	Resistor 5% 63mW	10k	0402R
R4400	Top	E	6	Resistor 5% 63mW	470k	0402R
R4401	Top	E	6	Resistor 5% 63mW	100k	0402R
R4402	Top	E	6	Resistor 5% 63mW	470k	0402R
R4403	Top	B	20	NTC RES 47K J B=4050+-3% 0402	47k	0402_NTH5
R4406	Top	E	20	CHIP VARISTOR VWM14V VC50V 0402	14V/50V	0402_VAR
R4407	BTM	A	8	CHIP VARISTOR VWM14V VC50V 0402	14V/50V	0402_VAR
R4408	BTM	A	8	Resistor 5% 63mW	10k	0402R
R4800	Top	D	5	Resistor 5% 63mW	10R	0402R
R4809	Top	E	3	Resistor 5% 63mW	1k0	0402R
R4810	Top	E	6	Resistor 5% 63mW	15R	0402R
R5100	Top	G	5	Resistor 5% 63mW	10k	0402R
R5200	BTM	I	7	ASIP EMIF04-MMC02F2**PB- FREE**	~	uBGA11_1.62X2.12
R5204	BTM	I	15	CHIP VARISTOR VWM14V VC50V 0402	14V/50V	0402_VAR
R7501	BTM	C	9	Resistor 5% 63mW	1k0	0402R
R7503	BTM	C	11	Resistor 5% 63mW	4k7	0402R
R7504	BTM	C	11	CHIPRES 0W06 10K F 0402	10k	0402R
R7505	BTM	C	9	CHIPRES 0W06 8K2 F 0402	8k2	0402R
R7506	BTM	G	17	Resistor 5% 63mW	33R	0402R

Item	Side	Grid ref.		Description and value		Type
R7509	BTM	C	8	Resistor 5% 63mW	10k	0402R
R7512	BTM	H	16	RES NETWORK 0W04 2DB ATT 0404	436R/ 11R6/ 436R	0404_RAC10
R7513	BTM	B	7	Chipres 0W06 5R6 J 0402	5R6	0402R
R7514	BTM	D	9	Resistor 5% 63mW	10k	0402R
R7516	BTM	I	18	Resistor 5% 63mW	1k0	0402R
R7517	BTM	D	10	Resistor 5% 63mW	3k3	0402R
R7518	BTM	I	17	Resistor 5% 63mW	470k	0402R
R7519	BTM	B	6	Resistor 5% 63mW	1k0	0402R
R7520	BTM	D	10	Resistor 5% 63mW	270R	0402R
R7521	BTM	D	9	CHIPRES 0W06 10K F 0402	10k	0402R
R7522	BTM	D	12	Resistor 5% 63mW	220k	0402R
R7523	BTM	A	6	CHIPRES 0W06 9K1 F 100PPM 0402	9k1	0402R
R7525	BTM	C	13	Resistor 5% 63mW	10R	0402R
R7526	BTM	B	14	Resistor 5% 63mW	5k6	0402R
R7527	BTM	C	14	Resistor 5% 63mW	220R	0402R
R7528	BTM	C	8	Resistor 5% 63mW	470k	0402R
R7529	BTM	C	13	Resistor 5% 63mW	2k2	0402R
R7530	BTM	C	13	Resistor 5% 63mW	8k2	0402R
R7531	BTM	C	12	Resistor 5% 63mW	8k2	0402R
R7534	BTM	C	8	Resistor 5% 63mW	470k	0402R
R7541	BTM	F	4	Chipres 0W06 jumper 0402	0R	0402R
R7542	BTM	F	4	Chipres 0W06 jumper 0402	0R	0402R
R7543	BTM	F	4	Chipres 0W06 jumper 0402	0R	0402R
R7544	BTM	F	5	Chipres 0W06 jumper 0402	0R	0402R
R7549	BTM	F	4	Resistor 5% 63mW	3k3	0402R
R7550	BTM	F	4	Resistor 5% 63mW	3k3	0402R
R7551	BTM	C	4	Chipres 0W06 jumper 0402	0R	0402R
R7552	BTM	F	5	Chipres 0W06 jumper 0402	0R	0402R
R7554	Top	G	3	Resistor 5% 63mW	100k	0402R
R7555	BTM	B	9	Resistor 5% 63mW	220R	0402R
R7556	BTM	E	6	Resistor 5% 63mW	100R	0402R
R7558	BTM	F	3	Resistor 5% 63mW	220R	0402R

Item	Side	Grid ref.		Description and value	Type	
R7559	BTM	G	2	RES VARISTOR 14/90V 3PF 0402	14/90V	0402_VAR
R7560	BTM	A	17	Chipres 0W06 jumper 0402	0R	0402R
S4401	Top	E	21	SM SW TACT SPST 12V SIDE KEY 2.2N	~	SWITCH_EVQP7A01K
S5200	BTM	I	14	SM SW DETECTOR SPST-NO 5V 1MA	~	SWITCH_SPVN220100
S5202	BTM	A	9	SWITCH DETECTOR SPVM	~	SWITCH_SPVM110200
T7500	BTM	D	11	TRANSF BALUN 2134+-90MHZ 0805	~	TRANS_LDB15
T7501	BTM	B	10	TRANSF BALUN 3800 +-550MHZ 0805	~	TRANS_LDB15
T7502	BTM	H	16	TRANSF BALUN 1800 +-100mhz 2x1.25	~	TRANS_LDB15
T7503	BTM	B	7	TRANSF BALUN 3800 +-550MHZ 0805	~	TRANS_LDB15
V1470	BTM	F	14	DI SCH DUAL 0.4V 1MA SOT490	~	SC_89
V1471	BTM	E	13	SCH DI PMEG3002 30V 500MA SOD882	~	DIODE_PMEG3002
V1472	BTM	E	12	MOSFET N 20V 350MA SOT416	~	SC_75A_H0.95
V2000	BTM	C	3	ASIP TVS BGA4	~	BGA4_1.01X1.07
V2300	BTM	C	7	TR DTC143ZM N RB=4K7 RBE=47K VMT3	~	VMT3_R
V4400	Top	B	20	DI PHOTO PT202MR0MP 620NM 1.25X2	~	PT202MR0MP
V7500	BTM	C	14	SCHDIX2 RF DETECTOR CT 1PF 0V39 SOT666	~	SOT_563
V7501	BTM	E	6	SCH DI 30V 2A SOD323F	~	SOD323F
V7502	BTM	C	15	BZX884-AA	~	SOD882
X1470	BTM	E	16	CAMERA MOD.SOCKET 2X7POL SPR P1.4	~	SOCKET_DMD10413
X1472	Top	H	20	SMD SOCKET P0.65 8.2X8.2X3.5MM	~	SOCKET_F6
X2001	BTM	F	1	SM SYSTEM CONNECTOR 14POL	~	SYSCON_MQ202_NK_14R3
X2060	Top	A	9	MODULE ID COMPONENT 2.8X1.8X0.3	~	TRACEABILITY_PAD
X2070	BTM	H	14	SM BATTERY CONN 3POL SPR 12V 2A	~	LYNX_BATT_CONN_H7.0
X2700	BTM	H	6	SM SIM CONN 6POL P2.54 H1.5	~	SIM_CONN_470191501

Item	Side	Grid ref.		Description and value		Type
X4400	Top	F	2	SM CONN 16P SPR P1.3 50V PWB/PWB	~	SMK_4309_B_B_16P_V8
X4401	Top	B	19	SM CONN 2X12F P0.4 30V 0.3A PCB/PCB	~	JST_R_JAVK_G_1_R3
X5200	BTM	H	11	CONN SMC RS-MMC 6POL P2.5	~	MOLEX_MMC_P03_3D0545_001
X5207	BTM	H	4	SPRING CLIP M3E14601 NSJ-3 HD925	~	ANT_CLIP_M3E14601
X5208	BTM	B	5	SM CONN VIBRA SPACER PAD 2.8X1.8	~	CONTACT_PAD_2.95X1.95
X5209	BTM	B	4	SM CONN VIBRA SPACER PAD 2.8X1.8	~	CONTACT_PAD_2.95X1.95
X5210	BTM	A	4	SM CONN VIBRA SPACER PAD 2.8X1.8	~	CONTACT_PAD_2.95X1.95
X5211	BTM	A	5	SM CONN VIBRA SPACER PAD 2.8X1.8	~	CONTACT_PAD_2.95X1.95
X5212	BTM	C	16	CONN 2POL SPR 6.6X6.8X2.5	~	POGO_CNO_5117_3077H
Z2000	Top	E	1	FERRITE BEAD 0.6R 600R/100MHZ 0402	600R/100MHz	FERRITE_0402
Z2001	Top	E	1	FERRITE BEAD 0.6R 600R/100MHZ 0402	600R/100MHz	FERRITE_0402
Z2003	Top	E	1	FERRITE BEAD 0.6R 600R/100MHZ 0402	600R/100MHz	FERRITE_0402
Z4400	Top	D	2	ASIP 10-CH ESD EMI FILTER BGA25	~	uBGA25_2.69X2.69
Z4401	Top	G	3	ASIP 2-CH MIC EMI/ESD **PB-FREE**	~	FC6_1.65X1.15
Z4402	Top	E	7	ASIP 10-CH ESD EMI FILTER BGA25	~	uBGA25_2.69X2.69
Z4403	Top	F	7	ASIP 10-CH ESD EMI FILTER BGA25	~	uBGA25_2.69X2.69
Z7500	BTM	F	14	FERRITE BEAD 0R01 28R/100MHZ 0603	28R/100MHz	FERRITE_FBMJ1608
Z7501	BTM	C	10	SAW FILTER 2140+-30MHZ/4DB 2X1.6	2140MHZ	FILTER_SAW_2.1X1.7_H0.8
Z7502	BTM	B	16	DUPL 1920-1980/2110-2170MHZ 9X4.3	1920-1980/2110-2170MHZ	DFYK61G95LBJCB
Z7503	BTM	H	18	ANT.SW+3SAW 880-960/1710-1990MHZ	~	ANT_SW_LMSP_0094

Item	Side	Grid ref.		Description and value		Type
Z7504	BTM	I	16	SAW FILTER 897.5+-17.5MHZ 2X1.6MM	897.5MH z	FILTER_SAW_2.0X1.6_H0.68
Z7505	BTM	B	14	ISOLATOR 1950+-30MHZ 13DB 3.55X3.35	~	ISOLATOR_CEZ0047
Z7506	BTM	D	10	SAW FILTER 1950+-30MHZ 2.0X1.6	1950MH z	FILTER_SAW_2.1X1.7_H0.9

Table 2 RM-99 component parts list (1PP_15)

Note: For Nokia product codes, please refer to the latest Service Bulletins on the Partner Website (PWS).

To ensure you are always using the latest codes, please check the PWS on a daily basis.

BTM = Bottom

Item	Side	Grid ref.		Description and value		Type
A7003	BTM	D	10	SHIELD_RM- 84/RM-99_RF	SHIELD RM- 84/RM-99 RF	~
A7004	BTM	B	7	SHIELD_RM- 84/RM- 99_VCO	SHIELD RM- 84/RM-99 VCO	~
A7005	BTM	E	12	SHIELD_RM- 84/RM- 99_FLASH	SHIELD RM- 84/RM-99 GSM FLASH	~
A7006	BTM	D	6	SHIELD_RM- 84/RM- 99_TAHVO	SHIELD RM- 84/RM-99 TAHVO	~
A7008	BTM	H	17	SHIELD_RM- 84/RM- 99_GSM_PA	SHIELD RM- 84/RM-99 GSM PA	~
B2200	Top	D	6	CRYSTAL_3.3 X1.6_H0.9	CRYSTAL 32.768KHZ +-20PPM 12.5PF	32.768kHz
C1470	BTM	D	15	0603C	CHIPCAP X5R 1U K 6V3 0603	1u0
C1471	BTM	F	18	0603C	CHIPCAP X5R 1U K 6V3 0603	1u0
C1472	BTM	F	6	0603C	CHIPCAP X5R 1U K 6V3 0603	1u0
C1473	BTM	G	7	0603C	CHIPCAP X5R 1U K 6V3 0603	1u0

Item	Side	Grid ref.		Description and value	Type
C1479	BTM	E	14	0603C CHIPCAP X5R 1U K 6V3 0603	1u0
C1480	BTM	D	14	0603C CHIPCAP X5R 1U K 6V3 0603	1u0
C1481	Top	D	20	0402C_H0.6 CHIPCAP X5R 100N M 16V 0402	100n
C1482	Top	D	20	0402C_H0.6 CHIPCAP X5R 100N M 16V 0402	100n
C1483	Top	E	6	0402C_H0.6 CHIPCAP X5R 100N M 16V 0402	100n
C1484	BTM	E	12	0805C CHIPCAP X5R 4U7 K 6V3 0805	4u7
C1485	BTM	E	13	1206C_H1.8 CHIPCAP 2U2 K 25V 1206	2u2
C1486	BTM	E	13	0402C_H0.6 CHIPCAP X5R 100N M 16V 0402	100n
C1487	BTM	C	15	0402C Chipcap 5% NP0	10p
C1488	BTM	C	15	0402C Chipcap 5% NP0	10p
C1489	Top	E	19	0402C Chipcap 5% NP0	22p
C1490	Top	E	20	0402C Chipcap 5% NP0	22p
C1491	Top	D	19	0402C Chipcap 5% NP0	22p
C2000	BTM	C	3	0402C Chipcap 5% NP0	27p
C2002	BTM	F	3	0603C CHIPCAP X5R 2U2 K 6V3 0603	2u2
C2003	BTM	F	3	0402C CERCAP X7R 22N K 16V 0402	22n

Item	Side	Grid ref.		Description and value		Type
C2004	BTM	G	3	0402C	CERCAP X7R 22N K 16V 0402	22n
C2005	BTM	F	2	0402C	Chipcap X7R 10% 16V 0402	10n
C2006	BTM	G	2	0402C	Chipcap X7R 10% 16V 0402	10n
C2007	BTM	G	2	0402C	Chipcap X7R 10% 16V 0402	10n
C2008	BTM	G	2	0402C	Chipcap X7R 10% 16V 0402	10n
C2009	BTM	G	2	0402C	Chipcap X7R 10% 16V 0402	10n
C2010	BTM	G	3	0402C	Chipcap X7R 10% 16V 0402	10n
C2011	Top	F	1	0402C	CHIPCAP NP0 270P J 25V 0402	270p
C2012	BTM	C	3	0603C_H0.95	CHIPCAP X5R 1U K 25V 0603	1u0
C2070	BTM	G	14	0402C	Chipcap 5% NP0	15p
C2072	BTM	I	15	0402C	Chipcap 5% NP0	15p
C2100	BTM	F	2	0402C	CHIPCAP X7R 15N K 16V 0402	15n
C2101	BTM	F	2	0402C	CHIPCAP X7R 15N K 16V 0402	15n
C2102	BTM	F	2	0603C	CHIPCAP X5R 2U2 K 6V3 0603	2u2
C2103	Top	E	6	0402C	Chipcap 5% X7R	1n0

Item	Side	Grid ref.		Description and value		Type
C2104	Top	E	6	0402C	Chipcap 5% X7R	1n0
C2105	Top	A	6	0402C	Chipcap X7R 10% 50V 0402	1n0
C2106	Top	A	6	0402C	Chipcap X7R 10% 50V 0402	1n0
C2107	Top	A	6	0402C	Chipcap X7R 10% 50V 0402	1n0
C2108	Top	B	6	0402C	Chipcap X7R 10% 50V 0402	1n0
C2109	Top	B	7	0402C	Chipcap X7R 10% 50V 0402	1n0
C2110	Top	A	7	0402C	Chipcap X7R 10% 50V 0402	1n0
C2200	Top	C	5	0603C	CHIPCAP X5R 1U K 6V3 0603	1u0
C2201	Top	C	7	0603C	CHIPCAP X5R 1U K 6V3 0603	1u0
C2202	Top	D	6	0402C	Chipcap X7R 10% 50V 0402	1n0
C2203	Top	D	6	0402C	Chipcap X7R 10% 50V 0402	1n0
C2204	Top	E	6	0402C	Chipcap X7R 10% 50V 0402	1n0
C2205	Top	D	5	0402C	Chipcap X7R 10% 50V 0402	1n0
C2206	Top	D	6	0402C	Chipcap X7R 10% 50V 0402	1n0
C2207	Top	E	6	0402C	Chipcap X7R 10% 50V 0402	1n0

Item	Side	Grid ref.		Description and value		Type
C2208	Top	D	7	0402C	Chipcap 5% NP0	27p
C2209	Top	D	7	0402C	Chipcap 5% NP0	22p
C2210	Top	B	7	0603C	CHIPCAP X5R 1U K 16V 0603	1u0
C2211	Top	B	6	0805C	CHIPCAP X5R 4U7 K 10V 0805	4u7
C2212	Top	B	6	0603C	CHIPCAP X5R 1U K 6V3 0603	1u0
C2213	Top	C	7	0603C	CHIPCAP X5R 1U K 6V3 0603	1u0
C2214	Top	C	7	0603C	CHIPCAP X5R 1U K 6V3 0603	1u0
C2215	Top	C	7	0603C	CHIPCAP X5R 1U K 6V3 0603	1u0
C2216	Top	D	7	0603C	CHIPCAP X5R 1U K 6V3 0603	1u0
C2217	Top	D	7	0603C	CHIPCAP X5R 1U K 6V3 0603	1u0
C2219	Top	D	6	0603C	CHIPCAP X5R 1U K 6V3 0603	1u0
C2220	Top	B	6	0603C	CHIPCAP X5R 1U K 6V3 0603	1u0
C2221	Top	B	7	0603C	CHIPCAP X5R 1U K 6V3 0603	1u0
C2222	Top	B	6	0603C	CHIPCAP X5R 1U K 6V3 0603	1u0
C2223	Top	C	5	0402C	Chipcap X7R 10% 16V 0402	10n

Item	Side	Grid ref.		Description and value		Type
C2224	Top	D	5	0402C	Chipcap X7R 10% 16V 0402	10n
C2225	Top	D	7	0603C	CHIPCAP X5R 1U K 6V3 0603	1u0
C2226	Top	D	7	0603C	CHIPCAP X5R 1U K 6V3 0603	1u0
C2227	Top	B	7	0603C	CHIPCAP X5R 1U K 6V3 0603	1u0
C2228	Top	C	7	0603C	CHIPCAP X5R 1U K 6V3 0603	1u0
C2230	Top	D	7	0603C	CHIPCAP X5R 1U K 6V3 0603	1u0
C2231	Top	A	5	0805C	CHIPCAP X5R 10U M 6V3 0805	10U
C2232	Top	C	7	0603C	CHIPCAP X5R 1U K 6V3 0603	1u0
C2234	Top	D	6	0402C	Chipcap 5% NP0	27p
C2235	Top	D	6	0402C	Chipcap X7R 10% 50V 0402	1n0
C2237	Top	E	7	0603C	CHIPCAP X5R 1U K 6V3 0603	1u0
C2240	Top	B	2	0402C	Chipcap 5% NP0	12p
C2241	Top	G	3	0402C	Chipcap 5% NP0	12p
C2242	Top	E	5	0402C	Chipcap 5% NP0	12p
C2243	Top	I	3	0402C	Chipcap 5% NP0	12p
C2244	Top	G	1	0402C	Chipcap 5% NP0	12p

Item	Side	Grid ref.		Description and value		Type
C2300	BTM	D	5	0402C	Chipcap X7R 10% 16V 0402	10n
C2301	BTM	D	6	0805C	CHIPCAP X5R 22U M 6V3 0805	22u
C2302	BTM	D	5	0805C	CHIPCAP X5R 22U M 6V3 0805	22u
C2303	BTM	D	7	0603C	CHIPCAP X5R 1U K 6V3 0603	1u0
C2304	BTM	C	6	0402C	Chipcap X7R 10% 16V 0402	10n
C2307	BTM	E	7	0603C	CHIPCAP X5R 2U2 K 6V3 0603	2u2
C2309	BTM	E	5	0805C	CHIPCAP X5R 22U M 6V3 0805	22u
C2312	BTM	E	7	0603C	CHIPCAP X5R 1U K 6V3 0603	1u0
C2313	BTM	E	7	0603C	CHIPCAP X5R 1U K 6V3 0603	1u0
C2314	Top	G	7	0805C	CHIPCAP X5R 4U7 M 25V 0805	4u7
C2315	Top	G	6	0805C	CHIPCAP X5R 4U7 M 25V 0805	4u7
C2316	BTM	C	6	0402C	Chipcap X7R 10% 50V 0402	1n0
C2700	BTM	H	7	0402C_H0.6	CHIPCAP X5R 100N M 16V 0402	100n
C2800	Top	H	3	0402C_H0.6	CHIPCAP X5R 100N M 16V 0402	100n

Item	Side	Grid ref.		Description and value		Type
C2801	Top	H	5	0402C_H0.6	CHIPCAP X5R 100N M 16V 0402	100n
C2802	Top	I	3	0402C_H0.6	CHIPCAP X5R 100N M 16V 0402	100n
C2803	Top	I	5	0402C_H0.6	CHIPCAP X5R 100N M 16V 0402	100n
C2804	Top	G	4	0402C_H0.6	CHIPCAP X5R 100N M 16V 0402	100n
C2805	Top	G	3	0402C_H0.6	CHIPCAP X5R 100N M 16V 0402	100n
C2806	Top	G	5	0402C_H0.6	CHIPCAP X5R 100N M 16V 0402	100n
C2807	Top	H	5	0603C	CHIPCAP X5R 1U K 6V3 0603	1u0
C2808	Top	G	4	0402C_H0.6	CHIPCAP X5R 100N M 16V 0402	100n
C2809	Top	H	5	0402C_H0.6	CHIPCAP X5R 100N M 16V 0402	100n
C2810	Top	G	5	0402C_H0.6	CHIPCAP X5R 100N M 16V 0402	100n
C2811	Top	I	5	0402C_H0.6	CHIPCAP X5R 100N M 16V 0402	100n
C2812	Top	H	3	0402C_H0.6	CHIPCAP X5R 100N M 16V 0402	100n
C2813	Top	I	3	0402C_H0.6	CHIPCAP X5R 100N M 16V 0402	100n
C2814	Top	I	3	0402C_H0.6	CHIPCAP X5R 100N M 16V 0402	100n

Item	Side	Grid ref.		Description and value		Type
C3000	Top	G	7	0402C_H0.6	CHIPCAP X5R 100N M 16V 0402	100n
C3001	Top	I	5	0402C_H0.6	CHIPCAP X5R 100N M 16V 0402	100n
C3002	Top	G	6	0402C_H0.6	CHIPCAP X5R 100N M 16V 0402	100n
C3003	Top	I	5	0402C	Chipcap X7R 10% 16V 0402	10n
C3004	Top	H	1	0402C_H0.6	CHIPCAP X5R 100N M 16V 0402	100n
C3005	Top	I	1	0402C_H0.6	CHIPCAP X5R 100N M 16V 0402	100n
C3006	Top	I	2	0402C_H0.6	CHIPCAP X5R 100N M 16V 0402	100n
C3007	Top	H	1	0402C	Chipcap X7R 10% 16V 0402	10n
C3008	Top	I	2	0402C_H0.6	CHIPCAP X5R 100N M 16V 0402	100n
C4200	Top	D	2	0805C	CHIPCAP X5R 22U M 6V3 0805	22u
C4201	Top	D	1	0805C	CHIPCAP X5R 22U M 6V3 0805	22u
C4203	Top	B	2	0603C	CHIPCAP X5R 1U K 6V3 0603	1u0
C4204	Top	C	2	0402C	Chipcap 5% NP0	100p
C4205	Top	B	5	0603C	CHIPCAP X5R 1U K 6V3 0603	1u0
C4206	Top	B	1	0603C	CHIPCAP X5R 1U K 6V3 0603	1u0

Item	Side	Grid ref.		Description and value		Type
C4400	Top	D	19	0603C	CHIPCAP X5R 1U K 6V3 0603	1u0
C4401	Top	D	19	0603C	CHIPCAP X5R 1U K 6V3 0603	1u0
C4402	Top	D	19	0402C	Chipcap 5% NP0	27p
C4800	Top	D	4	0402C_H0.6	CHIPCAP X5R 100N M 16V 0402	100n
C4801	Top	E	2	0603C	CHIPCAP X5R 1U K 6V3 0603	1u0
C4802	Top	G	5	0402C_H0.6	CHIPCAP X5R 100N M 16V 0402	100n
C4803	Top	G	5	0402C_H0.6	CHIPCAP X5R 100N M 16V 0402	100n
C4804	Top	E	5	0402C_H0.6	CHIPCAP X5R 100N M 16V 0402	100n
C4805	Top	G	3	0402C_H0.6	CHIPCAP X5R 100N M 16V 0402	100n
C4806	Top	E	3	0402C_H0.6	CHIPCAP X5R 100N M 16V 0402	100n
C4807	Top	D	4	0402C_H0.6	CHIPCAP X5R 100N M 16V 0402	100n
C4808	Top	G	3	0402C_H0.6	CHIPCAP X5R 100N M 16V 0402	100n
C4809	Top	G	4	0402C_H0.6	CHIPCAP X5R 100N M 16V 0402	100n
C4810	Top	F	3	0402C_H0.6	CHIPCAP X5R 100N M 16V 0402	100n
C4811	Top	E	3	0402C_H0.6	CHIPCAP X5R 100N M 16V 0402	100n

Item	Side	Grid ref.		Description and value		Type
C4812	Top	E	5	0402C_H0.6	CHIPCAP X5R 100N M 16V 0402	100n
C4813	Top	G	4	0402C	Chipcap X7R 10% 50V 0402	1n0
C4814	Top	E	6	0402C	Chipcap 5% NP0	22p
C5000	Top	B	2	0402C_H0.6	CHIPCAP X5R 100N M 16V 0402	100n
C5001	Top	D	3	0402C_H0.6	CHIPCAP X5R 100N M 16V 0402	100n
C5002	Top	D	4	0402C_H0.6	CHIPCAP X5R 100N M 16V 0402	100n
C5003	Top	B	2	0402C_H0.6	CHIPCAP X5R 100N M 16V 0402	100n
C5004	Top	D	3	0402C_H0.6	CHIPCAP X5R 100N M 16V 0402	100n
C5005	Top	D	5	0402C_H0.6	CHIPCAP X5R 100N M 16V 0402	100n
C5200	BTM	H	7	0603C	CHIPCAP X5R 1U K 6V3 0603	1u0
C7501	BTM	C	11	0402C	Chipcap 5% NP0	18p
C7503	BTM	C	11	0603C	CHIPCAP X5R 1U K 6V3 0603	1u0
C7504	BTM	C	11	0603C	CHIPCAP X5R 1U K 6V3 0603	1u0
C7505	BTM	B	11	0402C_H0.6	CHIPCAP X5R 100N M 16V 0402	100n
C7507	BTM	C	10	0402C	Chipcap 5% NP0	18p

Item	Side	Grid ref.		Description and value		Type
C7508	BTM	B	10	0402C	Chipcap 5% NP0	18p
C7509	BTM	C	11	0402C	Chipcap +-0.25pF NP0	2p7
C7512	BTM	G	19	0402C	Chipcap 5% NP0	39p
C7513	BTM	B	11	0402C	Chipcap X7R 10% 25V 0402	4n7
C7514	BTM	G	19	0402C	Chipcap 5% NP0	39p
C7515	BTM	C	9	0402C	Chipcap 5% NP0	10p
C7516	BTM	C	9	0402C	Chipcap 5% NP0	150p
C7518	BTM	E	9	0402C_H0.6	CHIPCAP X5R 100N M 16V 0402	100n
C7520	BTM	C	11	0402C	Chipcap 5% NP0	18p
C7522	BTM	C	9	0402C	Chipcap 5% NP0	150p
C7523	BTM	G	18	0402C	Chipcap +-0.25pF NP0	5p6
C7524	BTM	B	9	0603C	CHIPCAP NP0 2N2 G 16V 0603	2n2
C7525	BTM	G	18	0402C	Chipcap +-0.25pF NP0	5p6
C7527	BTM	B	10	0402C	Chipcap 5% NP0	100p
C7528	BTM	B	10	0402C	Chipcap 5% NP0	22p
C7529	BTM	D	9	0402C	Chipcap 5% NP0	100p
C7530	BTM	B	11	0402C	Chipcap X7R 10% 16V 0402	8n2

Item	Side	Grid ref.		Description and value		Type
C7531	BTM	C	10	0402C	Chipcap 5% NP0	22p
C7532	BTM	B	11	0402C	Chipcap X7R 10% 16V 0402	8n2
C7533	BTM	C	8	0402C	CERCAP X7R 22N K 16V 0402	22n
C7534	BTM	B	11	0402C	Chipcap X7R 10% 16V 0402	8n2
C7536	BTM	B	11	0402C	Chipcap X7R 10% 16V 0402	8n2
C7541	BTM	D	9	0603C	CHIPCAP X5R 1U K 6V3 0603	1u0
C7543	BTM	E	10	0603C	CHIPCAP X5R 1U K 6V3 0603	1u0
C7545	BTM	I	17	0402C	Chipcap +-0.25pF NP0	4p7
C7547	BTM	D	9	0402C	Chipcap +-0.25pF NP0	1p8
C7548	BTM	D	8	0603C	CHIPCAP X5R 1U K 6V3 0603	1u0
C7549	BTM	D	9	0402C	Chipcap 5% NP0	100p
C7550	BTM	E	8	0402C	Chipcap +-0.25pF NP0	2p7
C7552	BTM	D	8	0402C	Chipcap +-0.25pF NP0	2p7
C7553	BTM	D	8	0402C	Chipcap X7R 10% 16V 0402	8n2
C7554	BTM	B	6	0402C	Chipcap +-0.25pF NP0	4p7

Item	Side	Grid ref.		Description and value		Type
C7555	BTM	B	6	0402C	CHIPCAP NP0 0P5 C 50V 0402	0p5
C7556	BTM	G	16	0402C	Chipcap 5% NP0	10p
C7558	BTM	E	10	0402C	Chipcap 5% X7R	1n0
C7559	BTM	I	18	0402C	Chipcap +-0.25pF NP0	1p0
C7560	BTM	E	9	0402C	Chipcap X7R 10% 25V 0402	4n7
C7561	BTM	G	17	0402C	Chipcap +-0.25pF NP0	4p7
C7563	BTM	G	17	0402C	Chipcap +-0.25pF NP0	4p7
C7564	BTM	H	18	0402C	Chipcap 5% X7R	1n0
C7567	BTM	E	10	0402C	Chipcap 5% NP0	15p
C7568	BTM	E	8	0402C	Chipcap 5% NP0	150p
C7569	BTM	G	17	0603C	CHIPCAP X5R 4U7 K 6V3 0603	4u7
C7570	BTM	E	9	0402C	Chipcap 5% NP0	18p
C7571	BTM	B	6	0402C	CHIPCAP NP0 330P J 50V 0402	330p
C7573	BTM	A	6	0603C	CHIPCAP NP0 2N2 G 16V 0603	2n2
C7575	BTM	E	10	0402C	Chipcap 5% NP0	15p
C7577	BTM	E	10	0402C	Chipcap 5% NP0	15p
C7581	BTM	G	19	0402C	Chipcap 5% NP0	39p

Item	Side	Grid ref.		Description and value		Type
C7582	BTM	D	9	0402C	Chipcap 5% NP0	100p
C7584	BTM	G	18	0402C	Chipcap 5% NP0	39p
C7593	BTM	G	16	0603C	CHIPCAP X5R 4U7 K 6V3 0603	4u7
C7596	BTM	C	11	0402C	Chipcap +-0.25pF NP0	2p7
C7597	BTM	F	14	TANT_6.3X3. 5_H2.0	CHIPTCAP 100U M 14V 6X3.2X2	100u_14V
C7598	BTM	B	8	0402C	CHIPCAP NP0 0P5 C 50V 0402	0p5
C7599	Top	D	20	0402C	CHIPCAP X7R 33N K 10V 0402	33n
C7600	Top	B	20	0603C	CHIPCAP X5R 2U2 K 6V3 0603	2u2
C7601	Top	B	20	0603C	CHIPCAP X5R 2U2 K 6V3 0603	2u2
C7602	Top	B	2	0402C	Chipcap 5% NP0	12p
C7604	BTM	F	3	0402C	CHIPCAP X5R 100N K 10V 0402	100n
C7605	BTM	F	3	0402C	CHIPCAP X5R 100N K 10V 0402	100n
C7606	BTM	H	2	0402C	Chipcap 5% NP0	10p
C7607	BTM	H	2	0402C	Chipcap 5% NP0	10p
C7608	BTM	H	2	0402C	Chipcap 5% NP0	10p
C7609	BTM	G	2	0402C	Chipcap 5% NP0	10p

Item	Side	Grid ref.		Description and value		Type
C7612	BTM	C	4	0402C	CHIPCAP X5R 100N K 10V 0402	100n
C7613	BTM	F	3	0402C	CHIPCAP X5R 100N K 10V 0402	100n
C7614	BTM	D	11	0402C	CHIPCAP NP0 1P0 B 50V 0402	1p0
C7615	BTM	C	9	0402C	Chipcap +-0.25pF NP0	4p7
C7616	BTM	F	3	0402C	Chipcap X7R 10% 16V 0402	10n
C7617	BTM	F	3	0402C	Chipcap 5% NP0	100p
C7618	BTM	F	3	0402C_H0.6	CHIPCAP X5R 100N M 16V 0402	100n
D2800	Top	H	4	uBGA_289	RAP3G V2.20E-PA UMC8D F761800F 12C027	~
D3000	Top	H	7	PBFREEBGA4 0_64MB_54M HZ_MAX	FLASH 4MX16 1.8/ 1.8V FBGA44	4Mx16
D3001	Top	H	2	SDRAM_110 MHZ_64MBIT _BGA60_PBF REE_MAX	SDRAM 4MX16 1.8V/ 1.8V WBGA60	4Mx16
D4800	Top	E	4	uBGA_289	HELEN3 PS1.1E F761991A C027 UBGA289	~
D5000	Top	B	4	FBGA133	COMBO 512M DDR +512MNAND FBGA133 PBFREE	32Mx16/ 64Mx8
D5001	BTM	D	4	LGA_BTHFM_ ES3.6	BTHFM1.0_ES 3.6 MODULE	~

Item	Side	Grid ref.		Description and value		Type
F2000	BTM	C	2	0603_FUSE_A VX2MATS	SM FUSE F 2.0A 32V	2A
G2200	Top	F	6	BATTER_RB4 14H	CELL CAPACITOR 0.01MAH 3V3	3V3
G7500	BTM	B	9	VCO_FDK_WB 002	VCO 3610- 4340MHZ 2.7V 15MA	3610- 4340MHz
G7501	BTM	C	9	NKG3176B_H 1.0	VCTCX0 38.4MHZ 2.5V	38.4MHz
G7502	BTM	B	7	VCO_FDK_WB 002	VCO 3296- 3980MHZ 2.7V 20MA EGSM	3296- 3980MHz
L1473	BTM	E	11	CHOKE_SER3 00	CHOKE 3.3UH OR252 0A82 310 CASE SIZE	3u3H
L1474	Top	E	7	0805_BLM21	FERR.BEAD 0R03 42R/ 100MHZ 3A 0805	42R/100MHz
L1479	BTM	C	15	0402L	CHIP COIL 27N J Q27/ 800M 0402	27nH
L1480	BTM	C	15	0402L	CHIP COIL 27N J Q27/ 800M 0402	27nH
L2000	BTM	C	2	0603_BLM	FERR.BEAD 220R/100M 2A 0R05 0603	220R/ 100MHz
L2001	BTM	F	2	0405_2_MAT SU	CHIP BEAD ARRAY 2X1000R 0405	2x1000R/ 100MHz
L2002	BTM	G	2	0405_2_MAT SU	CHIP BEAD ARRAY 2X1000R 0405	2x1000R/ 100MHz
L2003	BTM	G	2	0405_2_MAT SU	CHIP BEAD ARRAY 2X1000R 0405	2x1000R/ 100MHz

Item	Side	Grid ref.		Description and value		Type
L2100	Top	E	19	0405_2_MAT SU	CHIP BEAD ARRAY 2X1000R 0405	2x1000R/ 100MHz
L2101	Top	B	6	0603_BLM	FERR.BEAD 220R/100M 2A 0R05 0603	220R/ 100MHz
L2102	BTM	F	18	COIL_0603CS	CHIP COIL 56N J Q38/ 250MHZ 0603	56nH
L2103	BTM	F	18	COIL_0603CS	CHIP COIL 56N J Q38/ 250MHZ 0603	56nH
L2104	Top	B	6	0603_BLM	FERR.BEAD 220R/100M 2A 0R05 0603	220R/ 100MHz
L2105	Top	B	6	0402L_XL	FERRITE BEAD 220R 0R45 0.3A 0402	220R/ 100MHz
L2106	Top	A	6	0402L_XL	FERRITE BEAD 220R 0R45 0.3A 0402	220R/ 100MHz
L2202	Top	E	7	0603_BLM	FERR.BEAD 220R/100M 2A 0R05 0603	220R/ 100MHz
L2203	Top	C	7	FERRITE_040 2	FERRITE BEAD 0.6R 600R/ 100MHZ 0402	600R/ 100MHz
L2204	Top	D	7	FERRITE_040 2	FERRITE BEAD 0.6R 600R/ 100MHZ 0402	600R/ 100MHz
L2205	Top	B	5	0603_BLM	FERR.BEAD 220R/100M 2A 0R05 0603	220R/ 100MHz

Item	Side	Grid ref.		Description and value	Type
L2206	Top	B	7	FERRITE_040 2	FERRITE BEAD 0.6R 600R/ 100MHZ 0402 600R/ 100MHz
L2301	BTM	E	6	0603_BLM	FERR.BEAD 220R/100M 2A 0R05 0603 220R/ 100MHz
L2302	BTM	D	5	CHOKE_SER4 00	CHOKE 10U 0.8A 0R24 4X4X1.8 10uH
L2304	Top	G	7	CHOKE_984F B	CHOKE 22U M 1R4 0.33A 3.3X3.3X1.5 22uH
L4200	Top	C	2	CHOKE_SER4 00	CHOKE 10U 0.8A 0R24 4X4X1.8 10uH
L4201	Top	E	2	0603_BLM	FERR.BEAD 220R/100M 2A 0R05 0603 220R/ 100MHz
L4400	Top	D	19	FERRITE_040 2	FERRITE BEAD 0.6R 600R/ 100MHZ 0402 600R/ 100MHz
L4401	Top	D	19	FERRITE_040 2	FERRITE BEAD 0.6R 600R/ 100MHZ 0402 600R/ 100MHz
L5200	BTM	H	7	FERRITE_040 2	FERRITE BEAD 0.6R 600R/ 100MHZ 0402 600R/ 100MHz
L7502	BTM	D	8	0402L	CHIP COIL 100N J Q16/ 300M 0402 100nH
L7503	BTM	E	10	FERRITE_040 2	FERRITE BEAD 0.6R 600R/ 100MHZ 0402 600R/ 100MHz

Item	Side	Grid ref.		Description and value		Type
L7504	BTM	H	19	0402L	CHIP COIL 47N J Q23/ 800MHZ 0402	47nH
L7506	BTM	H	18	0402L	CHIP COIL 12N J Q31/ 800M 0402	12nH
L7510	BTM	E	10	0402L	CHIP COIL 4N7 +-0N3 Q28/800M 0402	4n7H
L7511	BTM	D	10	0402L	CHIP COIL 10N J Q30/ 800M 0402	10nH
L7512	BTM	D	10	0402L	CHIP COIL 4N7 +-0N3 Q28/800M 0402	4n7H
L7516	BTM	G	16	FERRITE_040 2	FERRITE BEAD 0.6R 600R/ 100MHZ 0402	600R/ 100MHz
L7517	BTM	E	8	0402L	CHIP COIL 1N5 +-0N3 Q33/800M 0402	1n5H
L7518	BTM	G	3	COIL_LK_160 8	CHIP COIL 68NH J Q12/ 100MHZ 0603	68nH
L7520	BTM	D	11	0402L	CHIP COIL 2N7+-0N3 Q29/800M 0402	2n7H
N1470	BTM	G	7	LLP6	REG LP3990YDX- 1.5V LLP-6	~
N1471	BTM	E	13	SON3024_8	STEP-UP DC/ DC CONV SON3024-8	~
N1472	BTM	E	14	USMD5_1.47 X1.04_H0.67 5	VREG LP3985ITLX- 2.8 NOPB USMD5	~

Item	Side	Grid ref.		Description and value	Type
N1474	Top	D	20	TFBGA_42 14XLEVEL SHIFTER ST16C32245 TBR uTFBGA42	~
N2200	Top	C	6	TFBGA_108 RETU 3.02 TSA1GJWE TFBGA108	~
N2300	BTM	D	7	TFBGA_84_6. 15X6.15 TAHVO V4.1 LEADFREE TFBGA84 6X6	~
N2301	Top	G	6	USMD8_1.69 X1.69 WHITE LED DRIVER 4LEDS 500MW 8BUMP USMD8	~
N4200	Top	D	1	USMD_10_2.4 58X1.899 DC/DC CONV LM3661- 1.40V/1.05V NOPB	~
N4201	Top	B	2	USMD5_1.46 8X1.036 REG+ LP3999ITLX 1.8V 150MA NOPB	~
N7500	BTM	C	11	TFBGA_84_6. 15X6.15 RF ASIC HINKU310A TFBGA84	~
N7501	BTM	E	9	TFBGA64_H1. 2 RF ASIC VINKU314A TFBGA64	~
N7502	BTM	H	17	RITSA_PA_RE L3 PW AMP RF9292E9.2 QUADBAND	~
N7505	Top	C	20	LLP_6 REG LP3981YDX 2.8/NOPB 0.3A LLP-6	~
R1470	Top	G	4	0402R Resistor 5% 63mW	100R
R1471	Top	G	4	0402R Resistor 5% 63mW	100R
R1472	Top	F	3	0402R Resistor 5% 63mW	3k3

Item	Side	Grid ref.		Description and value		Type
R1473	Top	F	3	0402R	Resistor 5% 63mW	3k3
R1474	Top	G	5	0402R	Resistor 5% 63mW	33R
R1475	BTM	F	7	0402R	Resistor 5% 63mW	470k
R1486	Top	E	20	0402R	Resistor 5% 63mW	15R
R1487	BTM	E	12	0402R	CHIPRES 0W06 6R8 J 0402	6R8
R1488	Top	D	19	0402R	Resistor 5% 63mW	33R
R1489	BTM	E	13	0402R	Resistor 5% 63mW	3k3
R1490	Top	E	20	0402R	Chipres 0W06 jumper 0402	0R
R1491	BTM	E	12	0402R	Resistor 5% 63mW	10k
R2000	BTM	F	3	0402R	Resistor 5% 63mW	220R
R2001	BTM	F	3	uBGA11_2.1 5X1.65	ASIP MIC W/ ESD RES+CAP +ZDI BGA11	~
R2002	BTM	G	3	0402R	Resistor 5% 63mW	10R
R2003	BTM	G	3	0402R	Resistor 5% 63mW	10R
R2004	BTM	G	3	0402R	Resistor 5% 63mW	10R
R2005	BTM	H	3	0402R	Resistor 5% 63mW	10R
R2006	BTM	G	2	uBGA5	ASIP 4XESD **PB-FREE** BGA5	~
R2007	Top	F	1	uBGA11_1.6 X2.15	ASIP SILIC USB OTG / ESD BGA11	~
R2009	Top	G	1	0402R	Resistor 5% 63mW	100R

Item	Side	Grid ref.		Description and value		Type
R2010	Top	F	1	0402R	Resistor 5% 63mW	220k
R2011	Top	G	1	0402R	Resistor 5% 63mW	120k
R2070	BTM	G	14	0402_VAR	CHIP VARISTOR VWM14V VC50V 0402	14V/50V
R2071	Top	E	6	0402_NTH5	NTC RES 47KJ B=4050 +-3% 0402	47k
R2100	BTM	F	2	FLIP_CHIP_8_ 1.7X1.7	ASIP SINGLE ENDED MICROPHONE INTERF BGA8	~
R2101	BTM	E	2	0402R	Resistor 5% 63mW	220R
R2104	Top	E	19	0402_VAR	CHIP VARISTOR VWM14V VC50V 0402	14V/50V
R2105	Top	E	19	0402_VAR	CHIP VARISTOR VWM14V VC50V 0402	14V/50V
R2106	BTM	F	18	0402_VAR	CHIP VARISTOR VWM14V VC50V 0402	14V/50V
R2107	BTM	F	18	0402_VAR	CHIP VARISTOR VWM14V VC50V 0402	14V/50V
R2200	Top	E	6	0402R	Resistor 5% 63mW	100k
R2201	Top	E	6	0402R	Resistor 5% 63mW	120k
R2202	Top	E	6	0402R	Resistor 5% 63mW	100R
R2205	Top	E	7	0402R	CHIPRES 0W06 2M2 J 0402	2M2
R2301	Top	G	6	0402R	Resistor 5% 63mW	4k7

Item	Side	Grid ref.		Description and value		Type
R2302	Top	G	6	0402R	Resistor 5% 63mW	10k
R2303	Top	F	6	0402R	Resistor 5% 63mW	1k0
R2304	Top	F	6	0402R	Resistor 5% 63mW	39R
R2305	BTM	C	7	0402R	Resistor 5% 63mW	33R
R2700	BTM	I	6	uBGA8_1.47 X1.47	ASIP SIM INTERFACE **LOW CAP**BGA8	~
R3000	Top	G	6	0402R	Resistor 5% 63mW	10k
R4400	Top	E	6	0402R	Resistor 5% 63mW	470k
R4401	Top	E	6	0402R	Resistor 5% 63mW	100k
R4402	Top	E	6	0402R	Resistor 5% 63mW	470k
R4403	Top	B	20	0402_NTH5	NTC RES 47K J B=4050 +-3% 0402	47k
R4406	Top	E	20	0402_VAR	CHIP VARISTOR VWM14V VC50V 0402	14V/50V
R4407	BTM	A	8	0402_VAR	CHIP VARISTOR VWM14V VC50V 0402	14V/50V
R4408	BTM	A	8	0402R	Resistor 5% 63mW	10k
R4800	Top	D	5	0402R	Resistor 5% 63mW	10R
R4809	Top	E	3	0402R	Resistor 5% 63mW	1k0
R4810	Top	E	6	0402R	Resistor 5% 63mW	15R
R5100	Top	G	5	0402R	Resistor 5% 63mW	10k

Item	Side	Grid ref.		Description and value		Type
R5200	BTM	I	7	uBGA11_1.6 2X2.12	ASIP EMIF04- MMC02F2**P B-FREE**	~
R5204	BTM	I	15	0402_VAR	CHIP VARISTOR VWM14V VC50V 0402	14V/50V
R7501	BTM	C	9	0402R	Resistor 5% 63mW	1k0
R7503	BTM	C	11	0402R	Resistor 5% 63mW	4k7
R7504	BTM	C	11	0402R	CHIPRES 0W06 10K F 0402	10k
R7505	BTM	C	9	0402R	CHIPRES 0W06 8K2 F 0402	8k2
R7506	BTM	G	17	0402R	Resistor 5% 63mW	33R
R7509	BTM	C	8	0402R	Resistor 5% 63mW	10k
R7512	BTM	H	16	0404_RAC10	RES NETWORK 0W04 2DB ATT 0404	436R/11R6/ 436R
R7513	BTM	B	7	0402R	Chipres 0W06 5R6 J 0402	5R6
R7514	BTM	D	9	0402R	Resistor 5% 63mW	10k
R7516	BTM	I	18	0402R	Resistor 5% 63mW	1k0
R7517	BTM	D	10	0402R	Resistor 5% 63mW	3k3
R7518	BTM	I	17	0402R	Resistor 5% 63mW	470k
R7519	BTM	B	6	0402R	Resistor 5% 63mW	1k0
R7520	BTM	D	10	0402R	Resistor 5% 63mW	270R
R7521	BTM	D	9	0402R	CHIPRES 0W06 10K F 0402	10k

Item	Side	Grid ref.		Description and value		Type
R7523	BTM	A	6	0402R	CHIPRES 0W06 9K1 F 100PPM 0402	9k1
R7528	BTM	C	8	0402R	Resistor 5% 63mW	470k
R7534	BTM	C	8	0402R	Resistor 5% 63mW	470k
R7541	BTM	F	4	0402R	Chipres 0W06 jumper 0402	0R
R7542	BTM	F	4	0402R	Chipres 0W06 jumper 0402	0R
R7543	BTM	F	4	0402R	Chipres 0W06 jumper 0402	0R
R7544	BTM	F	5	0402R	Chipres 0W06 jumper 0402	0R
R7549	BTM	F	4	0402R	Resistor 5% 63mW	3k3
R7550	BTM	F	4	0402R	Resistor 5% 63mW	3k3
R7551	BTM	C	4	0402R	Chipres 0W06 jumper 0402	0R
R7552	BTM	F	5	0402R	Chipres 0W06 jumper 0402	0R
R7554	Top	G	3	0402R	Resistor 5% 63mW	100k
R7555	BTM	B	9	0402R	Resistor 5% 63mW	220R
R7556	BTM	E	6	0402R	Resistor 5% 63mW	100R
R7558	BTM	F	3	0402R	Resistor 5% 63mW	220R
R7559	BTM	G	2	0402_VAR	RES VARISTOR 14/90V 3PF 0402	14/90V

Item	Side	Grid ref.		Description and value		Type
R7560	BTM	A	17	0402R	Chipres 0W06 jumper 0402	0R
S4401	Top	E	21	SWITCH_EVQ P7A01K	SM SW TACT SPST 12V SIDE KEY 2.2N	~
S5200	BTM	I	14	SWITCH_SPV N220100	SM SW DETECTOR SPST-NO 5V 1MA	~
S5202	BTM	A	9	SWITCH_SPV M110200	SWITCH DETECTOR SPVM	~
T7500	BTM	D	11	TRANS_LDB1 5	TRANSF BALUN 2134 +-90MHZ 0805	~
T7501	BTM	B	10	TRANS_LDB1 5	TRANSF BALUN 3800 +-550MHZ 0805	~
T7502	BTM	H	16	TRANS_LDB1 5	TRANSF BALUN 1800 +-100mhz 2x1.25	~
T7503	BTM	B	7	TRANS_LDB1 5	TRANSF BALUN 3800 +-550MHZ 0805	~
V1470	BTM	F	14	SC_89	DI SCH DUAL 0.4V 1MA SOT490	~
V1471	BTM	E	13	DIODE_PMEG 3002	SCH DI PMEG3002 30V 500MA SOD882	~
V1472	BTM	E	12	SC_75A_H0.9 5	MOSFET N 20V 350MA SOT416	~
V2000	BTM	C	3	BGA4_1.01X1 .07	ASIP TVS BGA4	~

Item	Side	Grid ref.		Description and value	Type
V2300	BTM	C	7	VMT3_R TR DTC143ZM N RB=4K7 RBE=47K VMT3	~
V4400	Top	B	20	PT202MR0M P	DI PHOTO PT202MR0M P 620NM 1.25X2 ~
V7501	BTM	E	6	SOD323F	SCH DI 30V 2A SOD323F ~
V7502	BTM	C	15	SOD882	BZX884-AA ~
X1470	BTM	E	16	SOCKET_DMD 10413	CAMERA MOD.SOCKET 2X7POL SPR P1.4 ~
X2001	BTM	F	1	SYSCON_MQ2 02_NK_14R3	SM SYSTEM CONNECTOR 14POL ~
X2060	Top	A	9	TRACEABILIT Y_PAD	MODULE ID COMPONENT 2.8X1.8X0.3 ~
X2070	BTM	H	14	LYNX_BATT_C ONN_H7.0	SM BATTERY CONN 3POL SPR 12V 2A ~
X2700	BTM	H	6	SIM_CONN_4 70191501	SM SIM CONN 6POL P2.54 H1.5 ~
X4400	Top	F	2	SMK_4309_B _B_16P_V8	SM CONN 16P SPR P1.3 50V PWB/PWB ~
X4401	Top	B	19	JST_R_JAVK_G _1_R3	SM CONN 2X12F P0.4 30V 0.3A PCB/PCB ~
X5200	BTM	H	11	MOLEX_MMC_ P03_3D0545 _001	CONN SMC RS-MMC 6POL P2.5 ~
X5207	BTM	H	4	ANT_CLIP_M3 E14601	SPRING CLIP M3E14601 NSJ-3 HD925 ~

Item	Side	Grid ref.		Description and value		Type
X5208	BTM	B	5	CONTACT_PA D_2.95X1.95	SM CONN VIBRA SPACER PAD 2.8X1.8	~
X5209	BTM	B	4	CONTACT_PA D_2.95X1.95	SM CONN VIBRA SPACER PAD 2.8X1.8	~
X5210	BTM	A	4	CONTACT_PA D_2.95X1.95	SM CONN VIBRA SPACER PAD 2.8X1.8	~
X5211	BTM	A	5	CONTACT_PA D_2.95X1.95	SM CONN VIBRA SPACER PAD 2.8X1.8	~
X5212	BTM	C	16	POGO_CNO_5 117_3077H	CONN 2POL SPR 6.6X6.8X2.5	~
Z2000	Top	E	1	FERRITE_040 2	FERRITE BEAD 0.6R 600R/ 100MHZ 0402	600R/ 100MHz
Z2001	Top	E	1	FERRITE_040 2	FERRITE BEAD 0.6R 600R/ 100MHZ 0402	600R/ 100MHz
Z2003	Top	E	1	FERRITE_040 2	FERRITE BEAD 0.6R 600R/ 100MHZ 0402	600R/ 100MHz
Z4400	Top	D	2	uBGA25_2.6 9X2.69	ASIP 10-CH ESD EMI FILTER BGA25	~
Z4401	Top	G	3	FC6_1.65X1.1 5	ASIP 2-CH MIC EMI/ESD **PB-FREE**	~
Z4402	Top	E	7	uBGA25_2.6 9X2.69	ASIP 10-CH ESD EMI FILTER BGA25	~

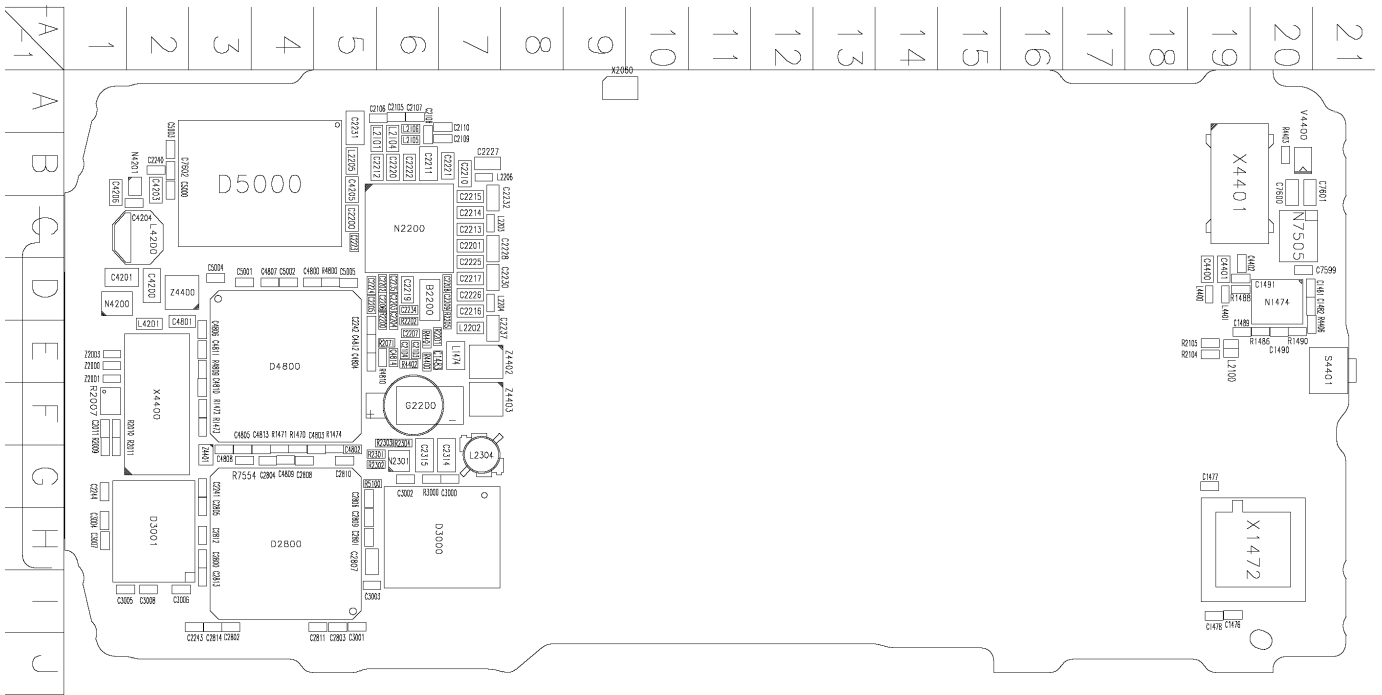


Figure 2 RM-84 component layout - top view (1MV_15)

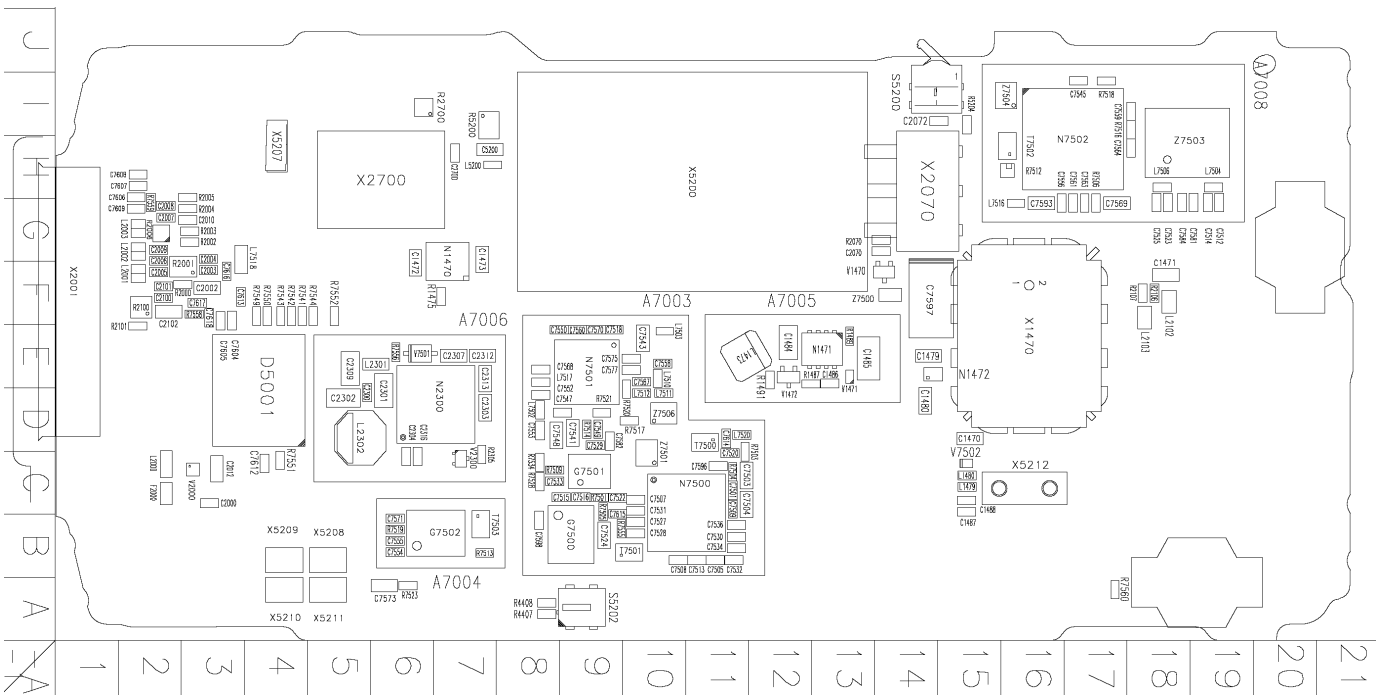


Figure 3 RM-99 component layout - bottom view (1PP_15)

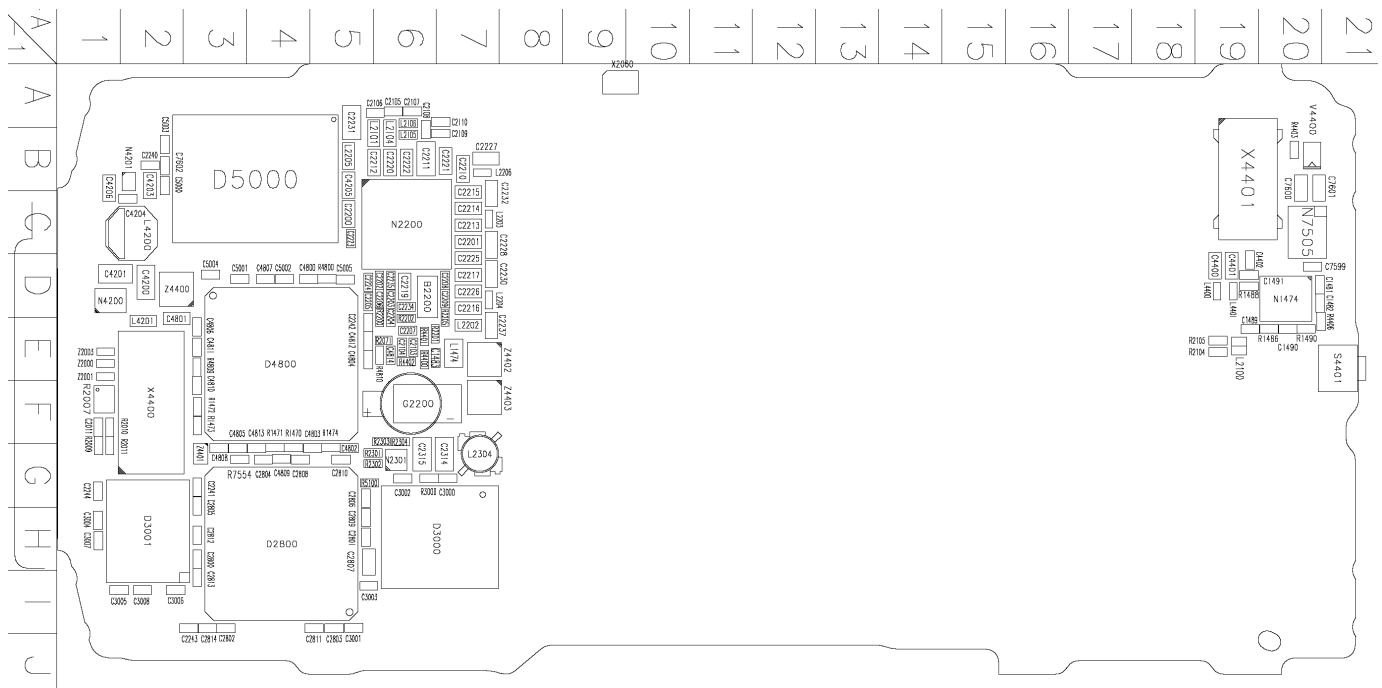


Figure 4 RM-99 component layout - top view (1PP_15)

(This page left intentionally blank.)